

FLOORTEK

FLOORING SYSTEMS



**2025
PRODUCT
CATALOGUE**



A premier Filipino construction chemical company, known for pioneering innovation and advocating for the right construction chemical products and methodologies. We are dedicated to advancing the standards of construction in the Philippines, aiming to achieve world-class quality through our cutting-edge solutions.

Our mission is to educate and empower through innovative, cost-efficient, reliable, and sustainable construction chemical technologies with a vision of being the prime advocate for continuous advancements, shaping a future where the Philippines achieves world-class standards. Guided by our core values—Hiya (integrity and pride), Malasakit (concern for people and organization), Tiya (resilience), and Malikhain (innovation and entrepreneurial spirit)—we drive progress in the industry.

With over 22 years of expertise, we have evolved into a leader in construction chemical manufacturing and distribution. Our 3.5-hectare headquarters in Santa Maria, Bulacan, features state-of-the-art infrastructure and a 164.45-kilowatt solar photovoltaic system, reflecting our commitment to sustainability. Our 19,000-square-meter warehouse and production facility ensures efficiency in storage, manufacturing, and distribution, guaranteeing timely delivery to meet customer demands. Backed by ISO 9001:2015 certification, we uphold the highest standards in quality and service.

Magna Prime's commitment to excellence is evident in its accolades. CEO Derrick Tan received the Agora Award for Outstanding Achievement in Entrepreneurship for his visionary leadership and marketing innovations. He was also recognized as a Top Innovator at the 4th Mansmith Innovation Awards 2024 for his contributions to chemical product innovation.

With a strong nationwide presence, we continue expanding our Buildrite Hubs and Sinclair Pro Stores, supported by distributors and Modern Trade partners across North and South Luzon. Our growing network ensures accessibility, excellent service, and continued innovation in the construction industry.



TABLE OF CONTENTS

Residential Flooring	4
IF11 - Resin-Based Topical Sealer with Gloss or Matt Finish & Stain-Resistant Properties, Designed for Areas with Light foot Traffic, such as living rooms	5
IF12 - Resin-based Topical Sealer With Matte Finish For Light Traffics and Floor Coating for Areas with Medium to Heavy-Duty exposed Areas	6
IF13 - Decorative, Durable Epoxy Coating, Designed for Areas with Light Mechanical Traffic such as Storage Area	7
IF14 - Durable and Chemical Self-Leveling Epoxy Designed for Areas with Light to Medium Traffic such as Activity Room	8
IF15 - Polyurethane Mortar Designed for Areas with Medium to Heavy Traffic such as Hygienic Floors	9
IF16 - Decorative, High-Strength, Permeable Floor Binder for Indoor and Outdoor Light-Traffic Areas	10
IF17 - Decorative, High-Strength, Stone Carpet Binder for Light-Traffic Areas	11
IF18 - Slip-Resistant Coating Designed for Areas with Light Traffic such as Tiles	12
Commercial and Institutional Flooring	13
IF19 - Resin-Based Topical Sealer with Gloss or Matt Finish & Stain-Resistant Properties, Designed for Areas with Light foot Traffic, such as School Hallways	14
IF20 - Durable and Chemical Resistant Self-Leveling Epoxy Desinged for Areas with Light to Medium Traffic such as Malls	15
IF21 - Decorative, Durable Epoxy Coating Designed for Areas with Light Traffic such as Hallways	16
IF22 - Non-skid PU Floor Coating Designed for Areas with Light to Medium Traffic such as Stairs and Access Ramp	17
IF23 - PU Rubberized Floor Coating Designed for Areas with Light to Medium Traffic such as Sports Facilities	18
IF24 - Floor Coating Designed for Areas with Medium to Heavy Traffic Exposed Areas	20
IF25 - Polyurethane Mortar Designed for Areas with Medium to Heavy Traffic such as Hospitals	21
IF26 - Ready-to-use Traffic Acrylic Coating Designed for Areas with Curb Marking	22
IF27 - Decorative, High-Strength, Permeable Stone Binder for Indoor and Outdoor Light-Traffic Areas	23
IF28 - Decorative, High-Strength, Stone Carpet Binder for Indoor Light-Traffic Areas	24
IF29 - Slip Resistant Coating Designed for Areas with Light Traffic such as Tiles	25
Industrial Flooring	
IF30 - Resin-Based Topical Sealer with Gloss or Matt Finish & Stain-Resistant Properties, Designed for Areas with Light foot Traffic, such as Warehouse	27
IF31 - Decorative, Durable Epoxy Coating, Designed for Areas with Light Mechanical Traffic such as Storage Area	28
IF32 - Durable and Chemical Resistant Self-Leveling Epoxy Designed for Areas with Light to Medium Traffic such as Manufacturing Areas	29
IF33 - Heavy-duty And Chemical Resistant Epoxy Mortar Designed for Areas with Heavy Traffic for Concrete Floors	30
IF34 - Non-skid PU Floor Coating Designed for Areas with Light to Medium Traffic such as Stairs and Access Ramp	32
IF35 - Ready-to-Use Thermoplastic-Acrylic Reflectorized Coating Designed for Road Markings	33
- Ready-to-use Traffic Acrylic Coating Designed for Areas with Curb Marking	34
IF36 - Polyurethane Mortar Designed for Areas with Medium to Heavy Traffic such as	
IF37 - Food Manufacturing Plant	35

RESIDENTIAL FLOORING



iStock™

Credit: ExperienceInteriors

30898254

Resin-Based Topical Sealer with Gloss or Matt Finish & Stain-Resistant Properties, Designed for Areas with Light foot Traffic, such as living rooms

IF **11**



Substrate **1**

Floortek S

Resin-Based Film-Forming
Gloss Sealer

or **2**

Floortek SM

Resin-Based Film-Forming
Gloss Sealer



FLOORTEK S

Resin-Based Film-Forming Gloss Sealer

FLOORTEK S is a clear, single-pack, ready-to-use, low-viscosity film-forming sealer that can be directly applied to concrete surfaces straight from the container. It is a blend of special resins specially formulated for indoor and outdoor concrete, masonry, brickwork, renders, and screed surfaces. It is also an excellent sealer for exposed aggregate finishes and porous toppings.

Consumption: 0.15 kg/sqm at 30 microns DFT.

Recommended:

- Parkway structures, driveways, garage floors, patios, walkways, decks, and sidewalks.
- Slate and terracotta tiles and certain natural stones to prevent staining on the surface.
- Waterproofing tile grouts/joints to prevent water seepage.
- Sealing coat on the underside and side of marble and granite to prevent the appearance of watermarks.
- Dust proofer coating for concrete, cement plaster, screeds, and exposed aggregate finishes.



FLOORTEK SM

Resin-Based Film-Forming Matte Sealer

FLOORTEK SM is a single-pack, supplied as a clear colorless low-viscosity film-forming sealer for concrete, masonry, and brickwork surfaces. It comprises a blend of special resins, which improves external weathering, and abrasion resistance properties and reduces the permeability of the applied substrate to water and salt solutions.

Consumption: 0.15 kg/sqm at 30 microns DFT

Recommended: • Parkway structures, driveways, garage floors, patios, walkways, decks, and sidewalks as a clear sealer.

- Slate and terracotta tiles and certain natural stones as a clear sealer to prevent staining on the surface.
- Waterproofing tile grouts, sealer to prevent water seepage through the tile joints.
- For waterproofing roof tiles, to prevent water seepage.
- Sealing coat on the underside and side of marble and granite, to prevent water marks from surfacing.
- Dust-proofing coating on concrete, cement plaster, screeds, and exposed aggregate finishes.

1 Concrete/Screed

Floortek S

Resin-Based Film-Forming
Gloss Sealer

2 or

Floortek SM

Resin-Based Film-Forming
Gloss Sealer



1 Concrete/Screed

2 Surfix Epocoat MB

Moisture Barrier Primer
for Floor Coatings

3 Floortek Shield

2K Water-Based Aliphatic
Polyurethane Coating



FLOORTEK SM

Resin-Based Film-Forming Matte Sealer

FLOORTEK SM is a single-pack, supplied as a clear colorless low-viscosity film-forming sealer for concrete, masonry, and brickwork surfaces. It comprises a blend of special resins, which improves external weathering, and abrasion resistance properties and reduces the permeability of the applied substrate to water and salt solutions.

Consumption: 0.15 kg/sqm at 30 microns DFT

Recommended: • Parkways structures, driveways, garage floors, patios, walkways, decks, and sidewalks as a clear sealer.

- Slate and terracotta tiles and certain natural stones as a clear sealer to prevent staining on the surface.
- Waterproofing tile grouts, sealer to prevent water seepage through the tile joints.
- For waterproofing roof tiles, to prevent water seepage.
- Sealing coat on the underside and side of marble and granite, to prevent water marks from surfacing.
- Dust-proofing coating on concrete, cement plaster, screeds, and exposed aggregate finishes.



FLOORTEK SHIELD

2K Water-Based Aliphatic
Polyurethane Coating

FLOORTEK SHIELD is a two-component water-based polyurethane specifically designed as a pigmented protective top coat for flooring. It is a hydrophilic aliphatic curing industrial coating for floors with smooth finish and exhibits good scratch resistance compared to epoxy. It is also flexible, odorless, and better weak acid resistance.

Consumption: 0.60 kg/sqm at 40 microns DFT

- Recommended:**
- Epoxy floorings as topcoat
 - Commercial establishments
 - Public restrooms
 - Elevated Parking
 - Raw concretes, screeds, and decorative cement flooring
 - Areas with high vibrations
 - Roof deck
 - Residential kitchens and bathrooms
 - Healthcare facilities

Mixing: Stir the individual components first before mixing. Mix Part A and Part B in a 6:1 ratio by volume. Thoroughly mix the components for 3 minutes or until the mixture is uniform.

Decorative, Durable Epoxy Coating, Designed for Areas with Light Mechanical Traffic such as Storage Area

IF **13**



Substrate **1**

Surfix Epocoat MB
Moisture Barrier Primer
for Floor Coatings **2**

Floortek FC
Epoxy Based Floor Coating **3**



SURFIX EPOCOAT MB Solvent Free Moisture Barrier Primer

SURFIX EPOCOAT MB is a two-component, 100% solid epoxy specially formulated as a high-strength primer for use in priming all concrete surface and steel prior to the application of any resin-based floor coatings and toppings.

Packaging: 3.8 kg gallon set **Coverage:** 13-14 sq.m per 3.8 kg gallon set at 250 microns thickness

Recommended: Wall concrete even if it has a damp surface. For bathrooms and washing areas of factories wherein there is always the presence of water surrounding them.

Mixing: Stir individual components before mixing. Add Part B to Part A and mix thoroughly until uniformly blended to a workable consistency. Use the mixture immediately. Do not mix more material than can be used within the expected pot life. No thinner is required.



FLOORTEK FC Epoxy-Based Floor Coating

FLOORTEK FC is a two-component, polyamide-cured epoxy glossed floor coating formulated from carefully selected, highest-grade epoxy resin and curing agent manufactured under strict quality control standards. The cured film forms a hard but flexible coating with excellent adhesion to clean concrete, steel, and wooden surfaces providing an impervious finish that can be easily maintained.

Packaging: 3.8 kg gallon set **Consumption:** 0.5 kg/sqm at 200 microns dft

Recommended: Storage tanks, Marine vessels and structures, Equipment for mining, chemical, textile, food, power, fertilizer, sugar and others Production areas, Warehouses, Gasoline station and others

Note: Prolonged exposure to sunlight may lead to yellowing and may fade overtime.

Mixing: Stir thoroughly the base component prior to the addition of the catalyst. Use a powerful mixer to attain a homogeneous mixture. Allow 15 minutes of induction time before application.

1 Substrate

2 Surfex Epocoat MB Moisture Barrier Primer for Floor Coatings

3 Floortek FCH Self-Leveling Epoxy Floor Coating



FLOORTEK FCH

Self-Leveling Epoxy Floor Coating

FLOORTEK FCH is a two-component epoxy floor coating specially formulated from high-grade resins and curing agents for flooring applications. It is lead-free and non-toxic when fully cured. It hardens to an abrasive-resistant coating with high abrasive strength on properly prepared substrates such as concrete and steel.

FLOORTEK FCH is water-impermeable and has excellent resistance to oil, solvents, alkalis, and most dilute acids.

Consumption: 0.6 kg/sqm at 500 microns DFT

Recommended: Floor topping of new and existing flooring of food processing plants, chemicals and pharmaceutical, factories, and sugar and oil refineries, Installation of anti-skid coatings / both indoors and outdoors, Production areas, Patching of deteriorated flooring, Warehouses, Gasoline station and others

Note: Prolonged exposure to sunlight may lead to yellowing and may fade overtime.

Mixing: Stir the base component thoroughly prior to the addition of the catalyst. Prepare enough materials that can be applied within 35 – 45 minutes. The entire content of the catalyst (Part B) should be poured into the base (Part A) container and mixed thoroughly. The use of a slow-speed drill fitted with a paddle is recommended.

Polyurethane Mortar Designed for Areas with Medium to Heavy Traffic Such as Hygienic Floors

IF15



Substrate **1**

Floortek Polycoat Mortar MD

Thick Polyurethane Mortar
Medium Build 500µm to 1mm
Scratch coat Thickness

2

Floortek Polycoat Mortar MD

Thick Polyurethane Mortar
Medium Build 3-5 mm

3

3 TOPCOAT
(3mm to 5mm)

2 SCRATCH COAT
(500µm to 1mm)

1

FLOORTEK POLYCOAT MORTAR MD

Thick Polyurethane Mortar Medium Build 3-5 mm

FLOORTEK POLYCOAT MORTAR is a 3-5 mm thick self-leveling polyurethane mortar floor topping. It has an attractive smooth, matte, colored floor finish with high abrasion resistance and excellent chemical resistance. It is suitable for dry and semi-wet areas where a seamless finish and a long-lasting floor are needed.

Packaging: 12 kg set

Consumption: 2.83 sqm / 17.2 kg set at 3 mm thickness
2.125 sqm / 17.2 kg set at 4 mm thickness
1.7 sqm / 17.2 kg set at 5 mm thickness

Recommended: Kitchen floors, Cold storage, Meat processing, Supermarkets, Catering and laundry areas, Clean rooms, Warehouses

Mixing: Mixing should be carried out using a forced action mixer or a heavy-duty, slow-speed drill fitted with a spiral mixing paddle. Transfer Part A into a mixing container then add Part D (colorant) and mix thoroughly for 1 minute. Add Part B and mix at a low speed for at least 1 minute until uniform. Add Part C slowly while stirring. Continue mixing for another 2 minutes until the four components are mixed thoroughly. Frequently scrape the sides and bottom of the mixing container during mixing to ensure no unmixed components. Thin the mixture before application using Part E (thinner) for good flow and ease of application



Decorative, High-Strength, Permeable Floor Binder for Indoor and Outdoor Light-Traffic Areas

1 Substrate

2 Floortek PF Stone Carpet Binder



FLOORTEK PF Permeable Floor Binder

FLOORTEK PF is a two-component permeable stone carpet binder specifically crafted for both indoor and outdoor applications. It is used for enhancing indoor and outdoor spaces, creating striking pebble walkways, patios, landscaped areas, leisure theme parks, etc. When the binder is thoroughly mixed with the pebbles, it results in a sleek and aesthetically pleasing surface.

FLOORTEK PF is a transparent, colorless crosslinking liquid binder, ensuring that the beauty of the area shines through.

Consumption: 0.60 kg/sqm at 5mm thickness (3-5 mm aggregates)
0.90 kg/sqm at 10 mm thickness (4-6 mm aggregates)
1.0 kg/sqm at 10 mm thickness (6-10 mm aggregates)

Recommended: • Patios • Showroom • Walkways • Commercial spaces • Leisure and recreational spaces

Mixing: Add the Part B (catalyst) to Part A (base) and mix thoroughly until uniform. Mix the stones and the binder mixture using a forced circulation mixer for large quantities. For small quantities, it can be mixed by hand in a container for 2-3 minutes. The mixture can be poured onto the cleaned area and level the surface using a trowel.

Decorative, High-Strength, Stone Carpet Binder for Light-Traffic Areas

IF **17**



Substrate **1**

Floortek SB **2**
Epoxy Stone Binder



FLOORTEK SB Stone Carpet Binder

FLOORTEK SB is a two-component epoxy stone binder specifically crafted for indoor applications. It is a cost-efficient binder used for enhancing indoor spaces, creating striking pebble walkways, patios, landscaped areas, indoor leisure theme parks, etc. When the binder is thoroughly mixed with the pebbles, it results in a sleek and aesthetically pleasing surface.

Consumption: 0.50 kg/sqm at 5mm thickness (3-5 mm aggregates)
0.80 kg/sqm at 10 mm thickness (4-6 mm aggregates)
1.0 kg/sqm at 10 mm thickness (6-10 mm aggregates)

Recommended: • Patios • Showroom • Walkways • Commercial spaces • Leisure and recreational spaces

Mixing: Add 2 Parts A to 1 Part B and mix thoroughly until uniform. Mix the stones and the binder mixture using a forced circulation mixer for large quantities. For small quantities, it can be mixed by hand in a container for 2-3 minutes. The mixture can be poured onto the cleaned area and level the surface using a trowel.

Slip-Resistant Coating Designed for Areas with Light Traffic such as Tiles

1 Tiles

2 Stopslip Tiles Anti-Slip Coating for Tiles



STOPSLIP TILES

Anti-Slip Coating for Tiles

STOPSLIP TILES enhances safety in light-traffic environments by providing a durable, non-slip surface minimizing the risk of accidents. It is designed for easy application and long-term performance, ensuring functionality and aesthetic integrity over time.

Consumption:

0.25 kg/sqm at 50 microns DFT.

Recommended:

- Commercial and Residential Existing Tiles

COMMERCIAL AND INSTITUTIONAL FLOORING



- Schools
 - Offices
 - Malls
 - Hospitals
-
-

1 Substrate

Floortek S

Resin-Based Film-Forming
Gloss Sealer

2 or

Floortek SM

Resin-Based Film-Forming
Gloss Sealer



FLOORTEK S

Resin-Based Film-Forming Gloss Sealer

FLOORTEK S is a clear, single-pack, ready-to-use, low-viscosity film-forming sealer that can be directly applied to concrete surfaces straight from the container. It is a blend of special resins specially formulated for indoor and outdoor concrete, masonry, brickwork, renders, and screed surfaces. It is also an excellent sealer for exposed aggregate finishes and porous toppings.

Consumption: 0.15 kg/sqm at 30 microns DFT.

Recommended:

- Parkway structures, driveways, garage floors, patios, walkways, decks, and sidewalks.
- Slate and terracotta tiles and certain natural stones to prevent staining on the surface.
- Waterproofing tile grouts/joints to prevent water seepage.
- Sealing coat on the underside and side of marble and granite to prevent the appearance of watermarks.
- Dust proofing coating for concrete, cement plaster, screeds, and exposed aggregate finishes.



FLOORTEK SM

Resin-Based Film-Forming Matte Sealer

FLOORTEK SM is a single-pack, supplied as a clear colorless low-viscosity film-forming sealer for concrete, masonry, and brickwork surfaces. It comprises a blend of special resins, which improves external weathering, and abrasion resistance properties and reduces the permeability of the applied substrate to water and salt solutions.

Consumption: 0.15 kg/sqm at 30 microns DFT

Recommended: • Parkway structures, driveways, garage floors, patios, walkways, decks, and sidewalks as a clear sealer.

- Slate and terracotta tiles and certain natural stones as a clear sealer to prevent staining on the surface.
- Waterproofing tile grouts, sealer to prevent water seepage through the tile joints.
- For waterproofing roof tiles, to prevent water seepage.
- Sealing coat on the underside and side of marble and granite, to prevent water marks from surfacing.
- Dust-proofing coating on concrete, cement plaster, screeds, and exposed aggregate finishes.

Durable and Chemical Resistant Self-Leveling Epoxy Designed for Areas with Light to Medium Traffic such as Malls

IF **20**



Substrate **1**

Surfix Epocoat MB
Moisture Barrier Primer
for Floor Coatings **2**

Floortek FCH
Self-Leveling Epoxy Floor
Coating **3**



FLOORTEK FCH Self-Leveling Epoxy Floor Coating

FLOORTEK FCH is a two-component epoxy floor coating specially formulated from high-grade resins and curing agents for flooring applications. It is lead- free and non-toxic when fully cured. It hardens to an abrasive-resistant coating with high abrasive strength on properly prepared substrates such as concrete and steel.

FLOORTEK FCH is water-impermeable and has excellent resistance to oil, solvents, alkalis, and most dilute acids.

Consumption: 0.6 kg/sqm at 500 microns DFT

Recommended: Floor topping of new and existing flooring of food processing plants, chemicals and pharmaceutical, factories, and sugar and oil refineries, Installation of anti-skid coatings / both indoors and outdoors, Production areas, Patching of deteriorated flooring, Warehouses, Gasoline station and others

Note: Prolonged exposure to sunlight may lead to yellowing and may fade overtime.

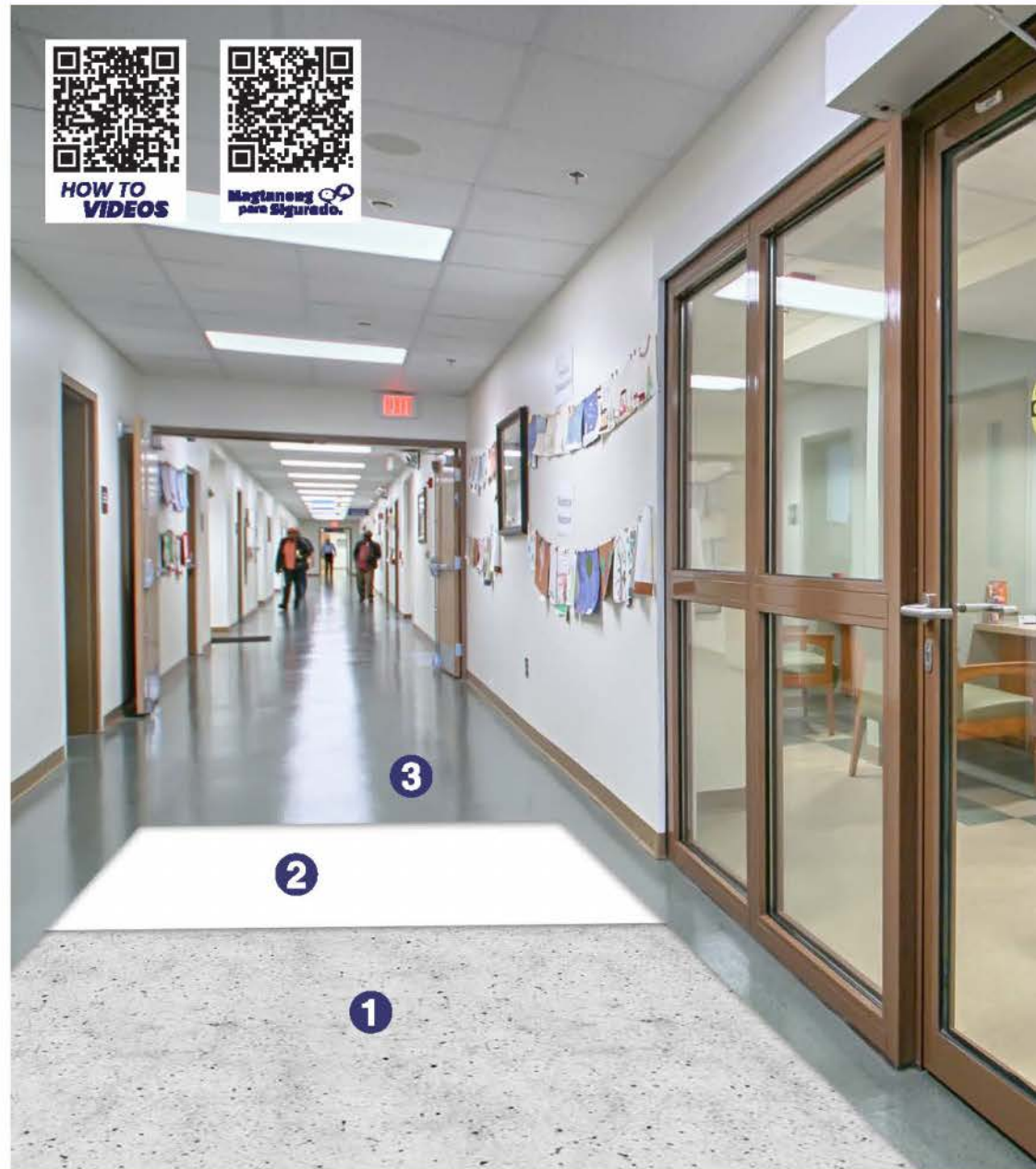
Mixing: Stir the base component thoroughly prior to the addition of the catalyst. Prepare enough materials that can be applied within 35 – 45 minutes. The entire content of the catalyst (Part B) should be poured into the base (Part A) container and mixed thoroughly. The use of a slow-speed drill fitted with a paddle is recommended.

Decorative, Durable Epoxy Coating Designed for Areas with Light Traffic such as Hallways

1 Substrate

2 Surfix Epocoat MB Moisture Barrier Primer for Floor Coatings

3 Floortek FC Epoxy Based Floor Coating



SURFIX EPOCOAT MB Solvent Free Moisture Barrier Primer

SURFIX EPOCOAT MB is a two-component, 100% solid epoxy specially formulated as a high-strength primer for use in priming all concrete surface and steel prior to the application of any resin-based floor coatings and toppings.

Packaging: 3.8 kg gallon set **Coverage:** 13-14 sq.m per 3.8 kg gallon set at 250 microns thickness

Recommended: Wall concrete even if it has a damp surface. For bathrooms and washing areas of factories wherein there is always the presence of water surrounding them.

Mixing: Stir individual components before mixing. Add Part B to Part A and mix thoroughly until uniformly blended to a workable consistency. Use the mixture immediately. Do not mix more material than can be used within the expected pot life. No thinner is required.



FLOORTEK FC Epoxy-Based Floor Coating

FLOORTEK FC is a two-component, polyamide-cured epoxy glossed floor coating formulated from carefully selected, highest-grade epoxy resin and curing agent manufactured under strict quality control standards. The cured film forms a hard but flexible coating with excellent adhesion to clean concrete, steel, and wooden surfaces providing an impervious finish that can be easily maintained.

Packaging: 3.8 kg gallon set **Consumption:** 0.5 kg/sqm at 200 microns dft

Recommended: Storage tanks, Marine vessels and structures, Equipment for mining, chemical, textile, food, power, fertilizer, sugar and others Production areas, Warehouses, Gasoline station and others

Note: Prolonged exposure to sunlight may lead to yellowing and may fade overtime.

Mixing: Stir thoroughly the base component prior to the addition of the catalyst. Use a powerful mixer to attain a homogeneous mixture. Allow 15 minutes of induction time before application.

Non-skid PU Floor Coating Designed for Areas with Light to Medium Traffic such as Stairs and Access Ramp

IF **22**



Substrate **1**

Stopslip Grip **2**
Non-Skid PU Floor Coating



STOPSIP GRIP

Non-Skid PU Floor Coating

STOPSIP GRIP is a modified polyurethane floor coating formulated for high performance and resistance to abrasion. Special kinds of aggregates were added to offer anti-slip for protection against harmful or dangerous slips on dry and wet floorings.

Consumption: 1.5 kg/sqm at 500 microns DFT

Recommended: • For basement floors, porch, decks, patio, steps, hallway, and other floor applications

PU Rubberized Floor Coating Designed for Areas with Light to Medium Traffic such as Sports Facilities

1 Substrate

2 Surfix Epocoat MB Moisture Barrier Primer for Floor Coatings

3 Floortek Flex Water-Based Rubberized Sports / Pavement Floor Coating



SURFIX EPOCOAT MB Solvent Free Moisture Barrier Primer

SURFIX EPOCOAT MB is a two-component, 100% solid epoxy specially formulated as a high-strength primer for use in priming all concrete surface and steel prior to the application of any resin-based floor coatings and toppings.

Packaging: 3.8 kg gallon set **Coverage:** 13-14 sq.m per 3.8 kg gallon set at 250 microns thickness

Recommended: Wall concrete even if it has a damp surface. For bathrooms and washing areas of factories wherein there is always the presence of water surrounding them.

Mixing: Stir individual components before mixing. Add Part B to Part A and mix thoroughly until uniformly blended to a workable consistency. Use the mixture immediately. Do not mix more material than can be used within the expected pot life. No thinner is required.



FLOORTEK FLEX Water-Based Rubberized Sports / Pavement Floor Coating

FLOORTEK FLEX is a one-component water-based acrylic polyurethane floor coating design for indoor and outdoor sports floors (basketball, tennis, and badminton courts). Its excellent mechanical, thermal, and UV resistance properties allow longer service life of the floor coating.

Consumption: 0.9 kg/sqm at 200 microns DFT

Recommended:

- Ideal for outdoor and indoor sports facilities (basketball, tennis, and track and fields)
- Basement floor, balconies, and patios

Rubberized Flooring System for Sports Floors and Exterior Pavements

FLOORTEK FLEX

Water-based Rubberized
Sports/Pavement Floor Coating



We Know FLOORS

Floor Coating Designed for Areas with Medium to Heavy Traffic Exposed Areas

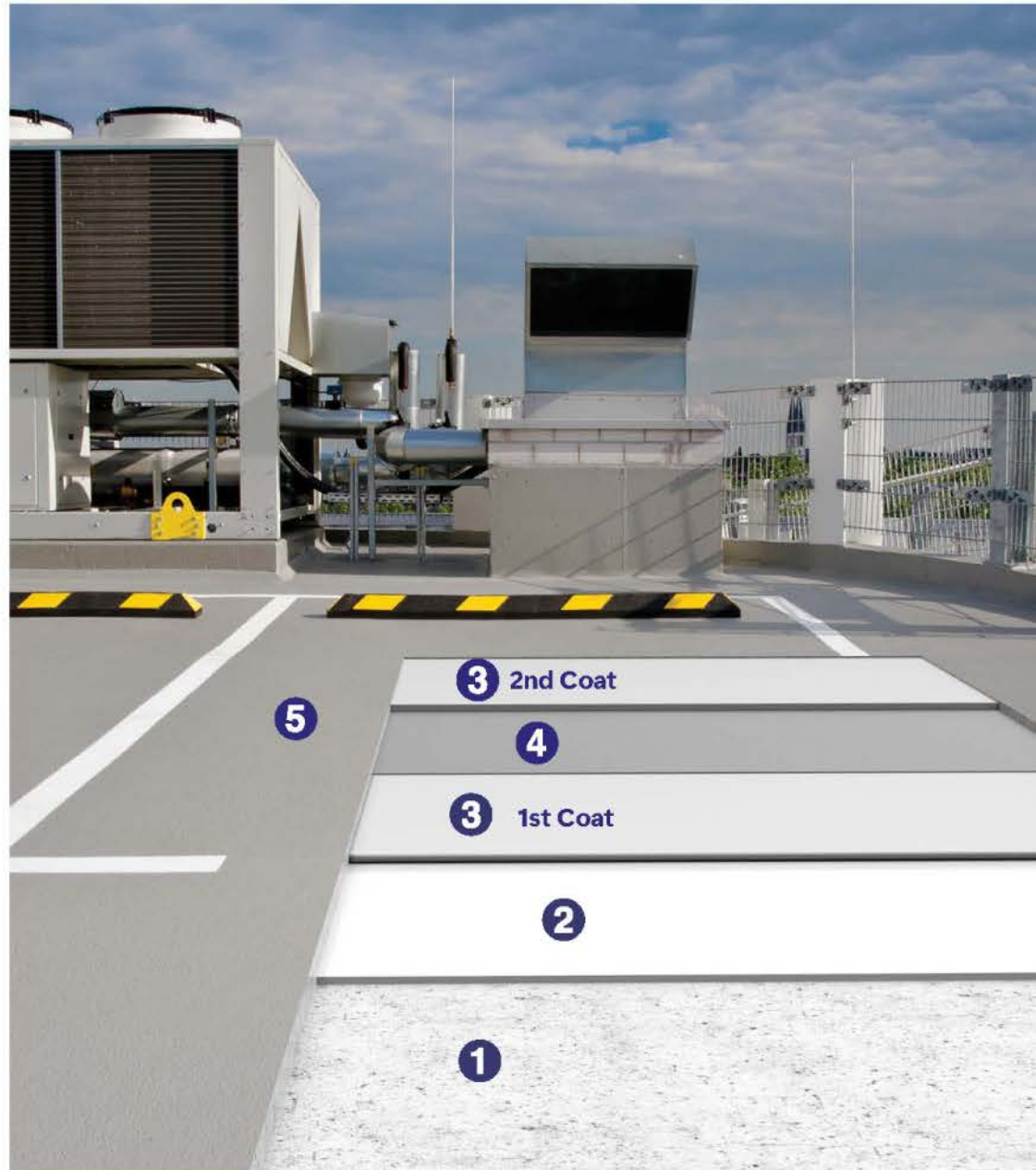
1 Substrate

2 **Surfix WB**
2K Water-based Epoxy
Bonding Primer

3 **Blockout Hyperblock 100**
1K Aromatic Solvent-Based
Polyurethane Waterproofing

4 **Blockout Cloth P60**
Polyester Fleece for Horizontal
Application 60 gsm

5 **Floortek Shield**
2K Water-Based Aliphatic
Polyurethane Coating



FLOORTEK SHIELD

2K Water-Based Aliphatic Polyurethane Coating

FLOORTEK SHIELD is a two-component water-based polyurethane specifically designed as a pigmented protective top coat for flooring. It is a hydrophilic aliphatic curing industrial coating for floors with smooth finish and exhibits good scratch resistance compared to epoxy. It is also flexible, odorless, and better weak acid resistance.

Consumption: 0.60 kg/sqm at 40 microns DFT

Recommended:

- Epoxy floorings as topcoat
- Commercial establishments
- Public restrooms
- Elevated Parking
- Raw concretes, screeds, and decorative cement flooring
- Areas with high vibrations
- Roof deck
- Residential kitchens and bathrooms
- Healthcare facilities

Mixing: Stir the individual components first before mixing. Mix Part A and Part B in a 6:1 ratio by volume. Thoroughly mix the components for 3 minutes or until the mixture is uniform.

Polyurethane Mortar Designed for Areas with Medium to Heavy Traffic such as Hospitals

IF **25**



Concrete/Screed **1**

Floortek Polycoat Mortar MD

Thick Polyurethane Mortar
Medium Build 500µm to 1mm
Scratch coat Thickness

Floortek Polycoat Mortar MD

Thick Polyurethane Mortar
Medium Build 3-5 mm

3 TOPCOAT
(3mm to 5mm)

2 SCRATCH COAT
(500µm to 1mm)

1



FLOORTEK POLYCOAT MORTAR MD

Thick Polyurethane Mortar Medium Build 3-5 mm

FLOORTEK POLYCOAT MORTAR is a 3-5 mm thick self-leveling polyurethane mortar floor topping. It has an attractive smooth, matte, colored floor finish with high abrasion resistance and excellent chemical resistance. It is suitable for dry and semi-wet areas where a seamless finish and a long-lasting floor are needed.

Packaging: 12 kg set

Consumption: 2.83 sqm / 17.2 kg set at 3 mm thickness
2.125 sqm / 17.2 kg set at 4 mm thickness
1.7 sqm / 17.2 kg set at 5 mm thickness

Recommended: Kitchen floors, Cold storage, Meat processing, Supermarkets, Catering and laundry areas, Clean rooms, Warehouses

Mixing: Mixing should be carried out using a forced action mixer or a heavy-duty, slow-speed drill fitted with a spiral mixing paddle. Transfer Part A into a mixing container then add Part D (colorant) and mix thoroughly for 1 minute. Add Part B and mix at a low speed for at least 1 minute until uniform. Add Part C slowly while stirring. Continue mixing for another 2 minutes until the four components are mixed thoroughly. Frequently scrape the sides and bottom of the mixing container during mixing to ensure no unmixed components. Thin the mixture before application using Part E (thinner) for good flow and ease of application

1 Substrate

2 Floortek TAC Traffic Acrylic Coating



FLOORTEK TAC Traffic Acrylic Coating

FLOORTEK TAC is a solvent-based paint used for road markings. It is fast-drying, durable and has excellent wear-and-tear resistance. It can also be used on parking areas with heavy traffic.

FLOORTEK TAC is a cold-applied traffic paint that does not require machines to apply it. It is relatively easier to apply compared to hot-applied traffic coatings.

Consumption: 0.20 kg/sqm at 50 microns DFT

Recommended:

- Concrete flooring
- Asphalt
- Plastered wall

Decorative, High-Strength, Permeable Stone Binder for Indoor and Outdoor Light-Traffic Areas

IF **27**



Substrate **1**

Floortek PF **2**
Stone Carpet Binder



FLOORTEK PF Permeable Floor Binder

FLOORTEK PF is a two-component permeable stone carpet binder specifically crafted for both indoor and outdoor applications. It is used for enhancing indoor and outdoor spaces, creating striking pebble walkways, patios, landscaped areas, leisure theme parks, etc. When the binder is thoroughly mixed with the pebbles, it results in a sleek and aesthetically pleasing surface.

FLOORTEK PF is a transparent, colorless crosslinking liquid binder, ensuring that the beauty of the area shines through.

Consumption: 0.60 kg/sqm at 5mm thickness (3-5 mm aggregates)
0.90 kg/sqm at 10 mm thickness (4-6 mm aggregates)
1.0 kg/sqm at 10 mm thickness (6-10 mm aggregates)

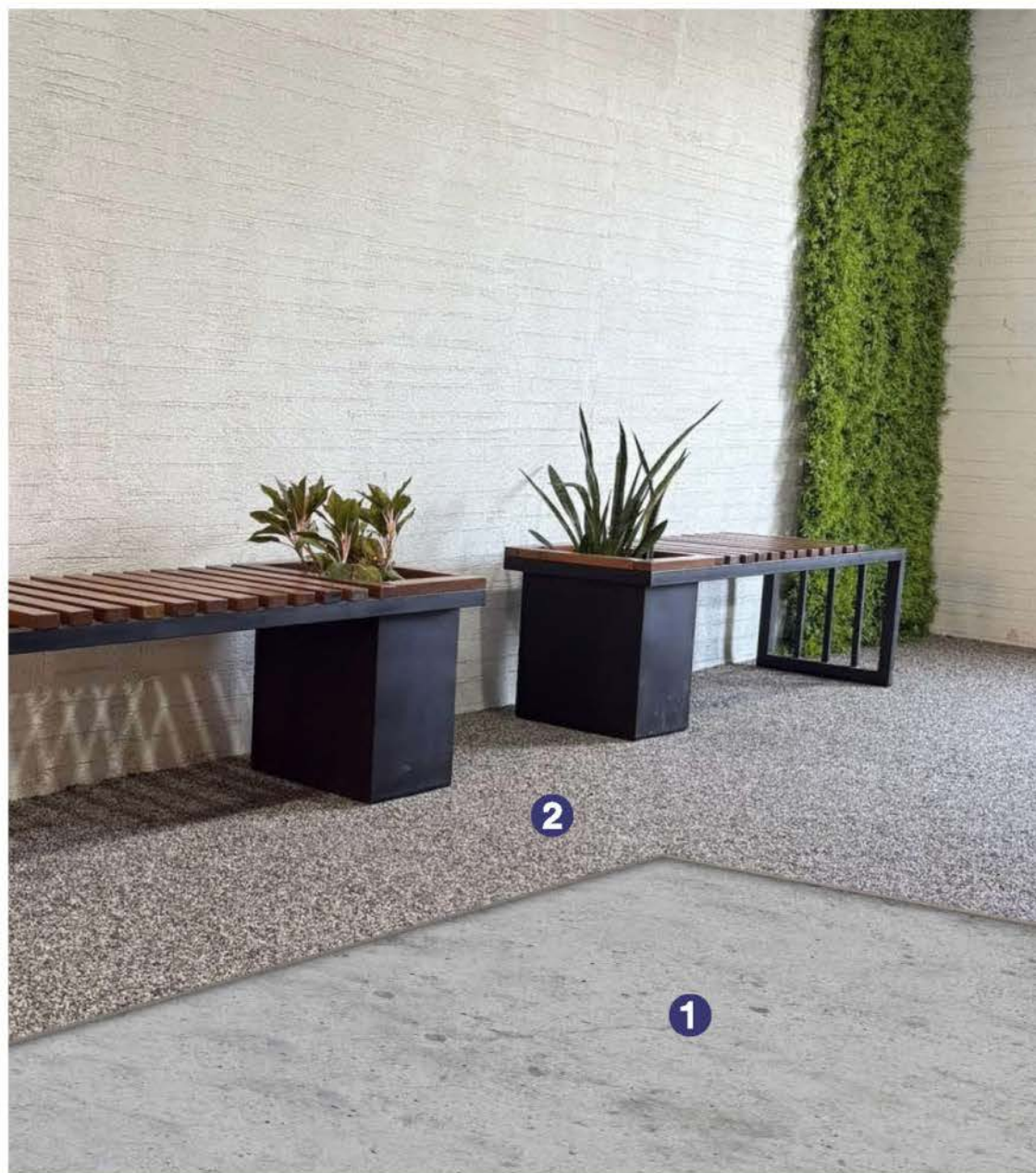
Recommended: • Patios • Showroom • Walkways • Commercial spaces • Leisure and recreational spaces

Mixing: Add the Part B (catalyst) to Part A (base) and mix thoroughly until uniform. Mix the stones and the binder mixture using a forced circulation mixer for large quantities. For small quantities, it can be mixed by hand in a container for 2-3 minutes. The mixture can be poured onto the cleaned area and level the surface using a trowel.

Decorative, High-Strength, Stone Carpet Binder for Indoor Light-Traffic Areas

1 Substrate

2 Floortek SB Epoxy Stone Binder



FLOORTEK SB

Stone Carpet Binder

FLOORTEK SB is a two-component epoxy stone binder specifically crafted for indoor applications. It is a cost-efficient binder used for enhancing indoor spaces, creating striking pebble walkways, patios, landscaped areas, indoor leisure theme parks, etc. When the binder is thoroughly mixed with the pebbles, it results in a sleek and aesthetically pleasing surface.

Consumption: 0.50 kg/sqm at 5mm thickness (3-5 mm aggregates)
0.80 kg/sqm at 10 mm thickness (4-6 mm aggregates)
1.0 kg/sqm at 10 mm thickness (6-10 mm aggregates)

Recommended: • Patios • Showroom • Walkways • Commercial spaces • Leisure and recreational spaces

Mixing: Add 2 Parts A to 1 Part B and mix thoroughly until uniform. Mix the stones and the binder mixture using a forced circulation mixer for large quantities. For small quantities, it can be mixed by hand in a container for 2-3 minutes. The mixture can be poured onto the cleaned area and level the surface using a trowel.

Slip Resistant Coating Designed for Areas with Light Traffic such as Tiles

IF 29

Tiles 1

Stopslip Tiles 2
Anti-Slip Coating for Tiles



STOPSLIP TILES

Anti-Slip Coating for Tiles

STOPSLIP TILES enhances safety in light-traffic environments by providing a durable, non-slip surface minimizing the risk of accidents. It is designed for easy application and long-term performance, ensuring functionality and aesthetic integrity over time.

Consumption: 0.25 kg/sqm at 50 microns DFT.

Recommended:

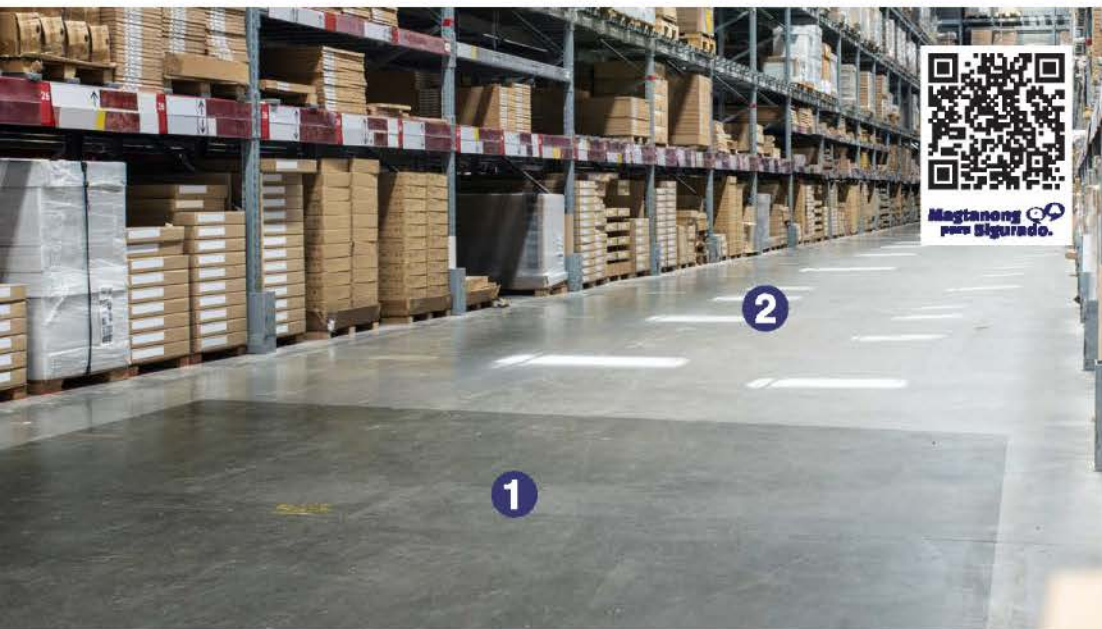
- Commercial and Residential Existing Tiles

INDUSTRIAL FLOORING



Resin-Based Topical Sealer with Gloss or Matt Finish & Stain-Resistant Properties, Designed for Areas with Light foot Traffic, such as Warehouse

IF30



Substrate **1**

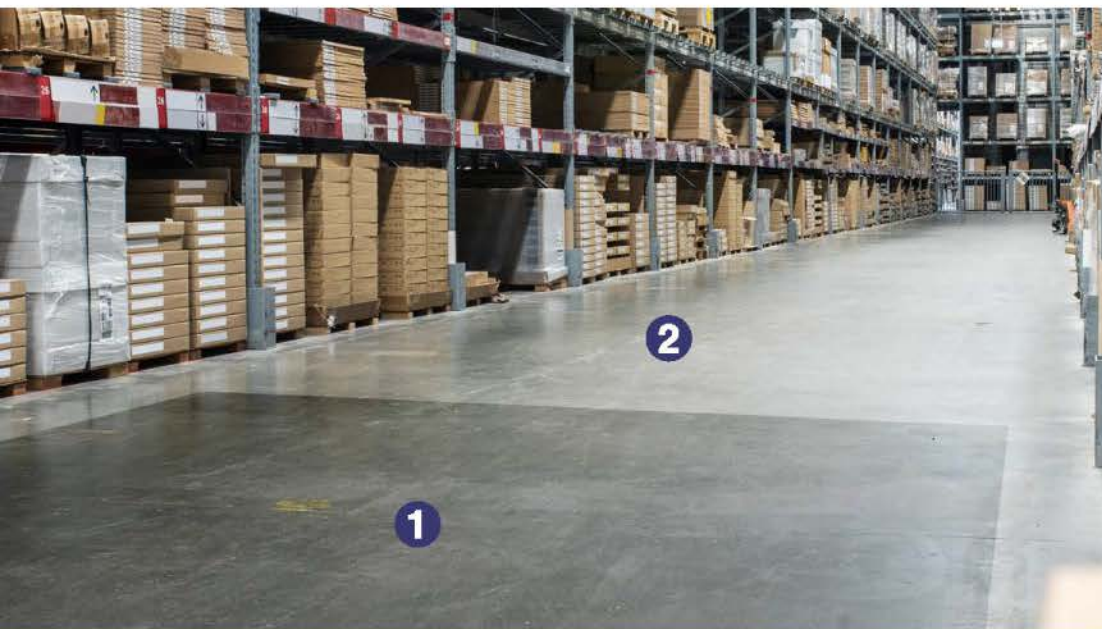
Floortek S

Resin-Based Film-Forming
Gloss Sealer

or **2**

Floortek SM

Resin-Based Film-Forming
Gloss Sealer



FLOORTEK S

Resin-Based Film-Forming Gloss Sealer

FLOORTEK S is a clear, single-pack, ready-to-use, low-viscosity film-forming sealer that can be directly applied to concrete surfaces straight from the container. It is a blend of special resins specially formulated for indoor and outdoor concrete, masonry, brickwork, renders, and screed surfaces. It is also an excellent sealer for exposed aggregate finishes and porous toppings.

Consumption: 0.15 kg/sqm at 30 microns DFT.

Recommended:

- Parkway structures, driveways, garage floors, patios, walkways, decks, and sidewalks.
- Slate and terracotta tiles and certain natural stones to prevent staining on the surface.
- Waterproofing tile grouts/joints to prevent water seepage.
- Sealing coat on the underside and side of marble and granite to prevent the appearance of watermarks.
- Dust proofer coating for concrete, cement plaster, screeds, and exposed aggregate finishes.



FLOORTEK SM

Resin-Based Film-Forming Matte Sealer

FLOORTEK SM is a single-pack, supplied as a clear colorless low-viscosity film-forming sealer for concrete, masonry, and brickwork surfaces. It comprises a blend of special resins, which improves external weathering, and abrasion resistance properties and reduces the permeability of the applied substrate to water and salt solutions.

Consumption: 0.15 kg/sqm at 30 microns DFT

Recommended: • Parkway structures, driveways, garage floors, patios, walkways, decks, and sidewalks as a clear sealer.

- Slate and terracotta tiles and certain natural stones as a clear sealer to prevent staining on the surface.
- Waterproofing tile grouts, sealer to prevent water seepage through the tile joints.
- For waterproofing roof tiles, to prevent water seepage.
- Sealing coat on the underside and side of marble and granite, to prevent water marks from surfacing.
- Dust-proofing coating on concrete, cement plaster, screeds, and exposed aggregate finishes.

Decorative, Durable Epoxy Coating, Designed for Areas with Light Mechanical Traffic such as Storage Area

1 Substrate

2 Surfex Epocoat MB Moisture Barrier Primer for Floor Coatings

3 Floortek FC Epoxy Based Floor Coating



SURFIX EPOCOAT MB Solvent Free Moisture Barrier Primer

SURFIX EPOCOAT MB is a two-component, 100% solid epoxy specially formulated as a high-strength primer for use in priming all concrete surface and steel prior to the application of any resin-based floor coatings and toppings.

Packaging: 3.8 kg gallon set **Coverage:** 13-14 sq.m per 3.8 kg gallon set at 250 microns thickness

Recommended: Wall concrete even if it has a damp surface. For bathrooms and washing areas of factories wherein there is always the presence of water surrounding them.

Mixing: Stir individual components before mixing. Add Part B to Part A and mix thoroughly until uniformly blended to a workable consistency. Use the mixture immediately. Do not mix more material than can be used within the expected pot life. No thinner is required.



FLOORTEK FC Epoxy-Based Floor Coating

FLOORTEK FC is a two-component, polyamide-cured epoxy glossed floor coating formulated from carefully selected, highest-grade epoxy resin and curing agent manufactured under strict quality control standards. The cured film forms a hard but flexible coating with excellent adhesion to clean concrete, steel, and wooden surfaces providing an impervious finish that can be easily maintained.

Packaging: 3.8 kg gallon set **Consumption:** 0.5 kg/sqm at 200 microns dft

Recommended: Storage tanks, Marine vessels and structures, Equipment for mining, chemical, textile, food, power, fertilizer, sugar and others Production areas, Warehouses, Gasoline station and others

Note: Prolonged exposure to sunlight may lead to yellowing and may fade overtime.

Mixing: Stir thoroughly the base component prior to the addition of the catalyst. Use a powerful mixer to attain a homogeneous mixture. Allow 15 minutes of induction time before application.

Durable and Chemical Resistant Self-Leveling Epoxy Designed for Areas with Light to Medium Traffic such as Manufacturing Areas

IF32



Substrate **1**

Surfix Epocoat MB

Moisture Barrier Primer
for Floor Coatings

2

Floortek FCH

Self-Leveling Epoxy Floor
Coating

3



FLOORTEK FCH

Self-Leveling Epoxy Floor Coating

FLOORTEK FCH is a two-component epoxy floor coating specially formulated from high-grade resins and curing agents for flooring applications. It is lead- free and non-toxic when fully cured. It hardens to an abrasive-resistant coating with high abrasive strength on properly prepared substrates such as concrete and steel.

FLOORTEK FCH is water-impermeable and has excellent resistance to oil, solvents, alkalis, and most dilute acids.

Consumption: 0.6 kg/sqm at 500 microns DFT

Recommended: Floor topping of new and existing flooring of food processing plants, chemicals and pharmaceutical, factories, and sugar and oil refineries, Installation of anti-skid coatings / both indoors and outdoors, Production areas, Patching of deteriorated flooring, Warehouses, Gasoline station and others

Note: Prolonged exposure to sunlight may lead to yellowing and may fade overtime.

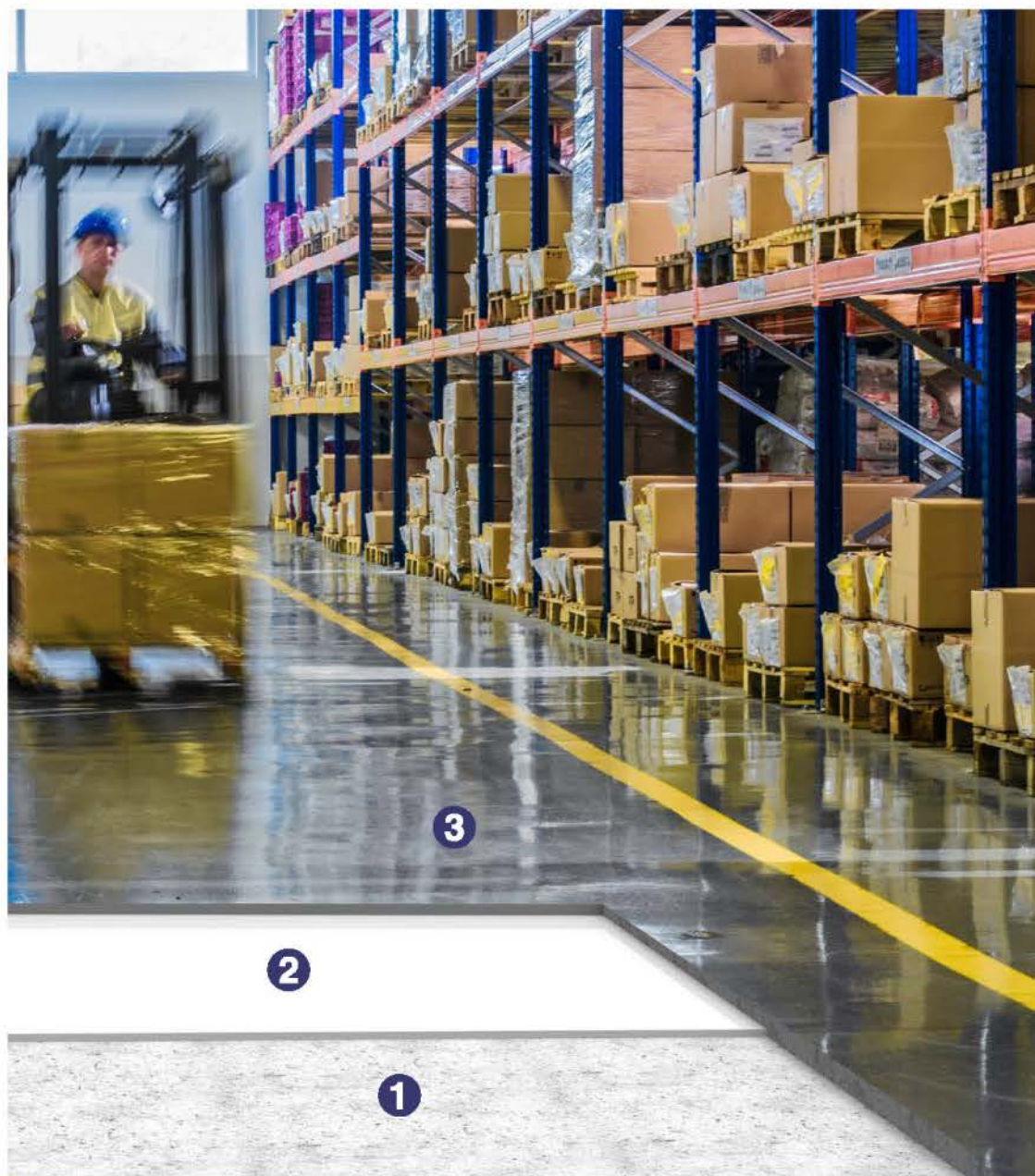
Mixing: Stir the base component thoroughly prior to the addition of the catalyst. Prepare enough materials that can be applied within 35 – 45 minutes. The entire content of the catalyst (Part B) should be poured into the base (Part A) container and mixed thoroughly. The use of a slow-speed drill fitted with a paddle is recommended.

Heavy-duty And Chemical Resistant Epoxy Mortar Designed for Areas with Heavy Traffic for Concrete Floors

1 Substrate

2 Surfix Epocoat MB Moisture Barrier Primer for Floor Coatings

3 Floortek EMS Epoxy Mortar Coating 0.5 - 1.5 mm



FLOORTEK EMS Epoxy Mortar Coating 0.5 - 1.5 mm

FLOORTEK EMS is a three-component epoxy-based floor topping formulated from high-grade resins and curing agents specially for flooring application. It is designed for use in a wide range of industrial environments. It provides a dense, impervious, and chemically resistant floor surface that is hygienic and easy to clean. When laid, it provides a smooth, light reflective surface. It is available in a range of colors.

Consumption: 2.5 kg/sqm at 1mm thickness

Recommended:

- Floor topping of new and existing flooring of food processing plants, chemicals and pharmaceutical factories, sugar and oil refineries
- Production areas, kitchens, plant rooms, car parks and garages
- Patching of deteriorated flooring
- Warehouses
- Gasoline station and others

Mixing: Mixing should be carried out using either a forced actions mixer or a heavy-duty, slow speed drill fitted with spiral mixing paddle. The components should be mixed in a suitably sized mixing vessel. Stir thoroughly the base component prior to the addition of the hardener. Then add the hardener and mix for 1 minute until an even color and texture is obtained. Then add the filler or aggregates slowly and mix further for 3 minutes until a homogenous material is obtained.

STOPSLIP GRIP

Anti-Slip Floor Coating for Concrete



UV
RESISTANT



NON-SLIP



FLEXIBLE

PASSED DCOF (COEFFICIENT OF FRICTION)
CRITERIA SET BY ADA

SLIP-RESISTANCE RESULTS:

WET - 0.80 DCOF
DRY - 0.70 DCOF

STOPSLIP TILES

Anti-Slip Coating for Tiles



INDOOR AND
OUTDOOR USE



NON-SLIP



EASY TO USE

PASSED DCOF (COEFFICIENT OF FRICTION)
CRITERIA SET BY ADA

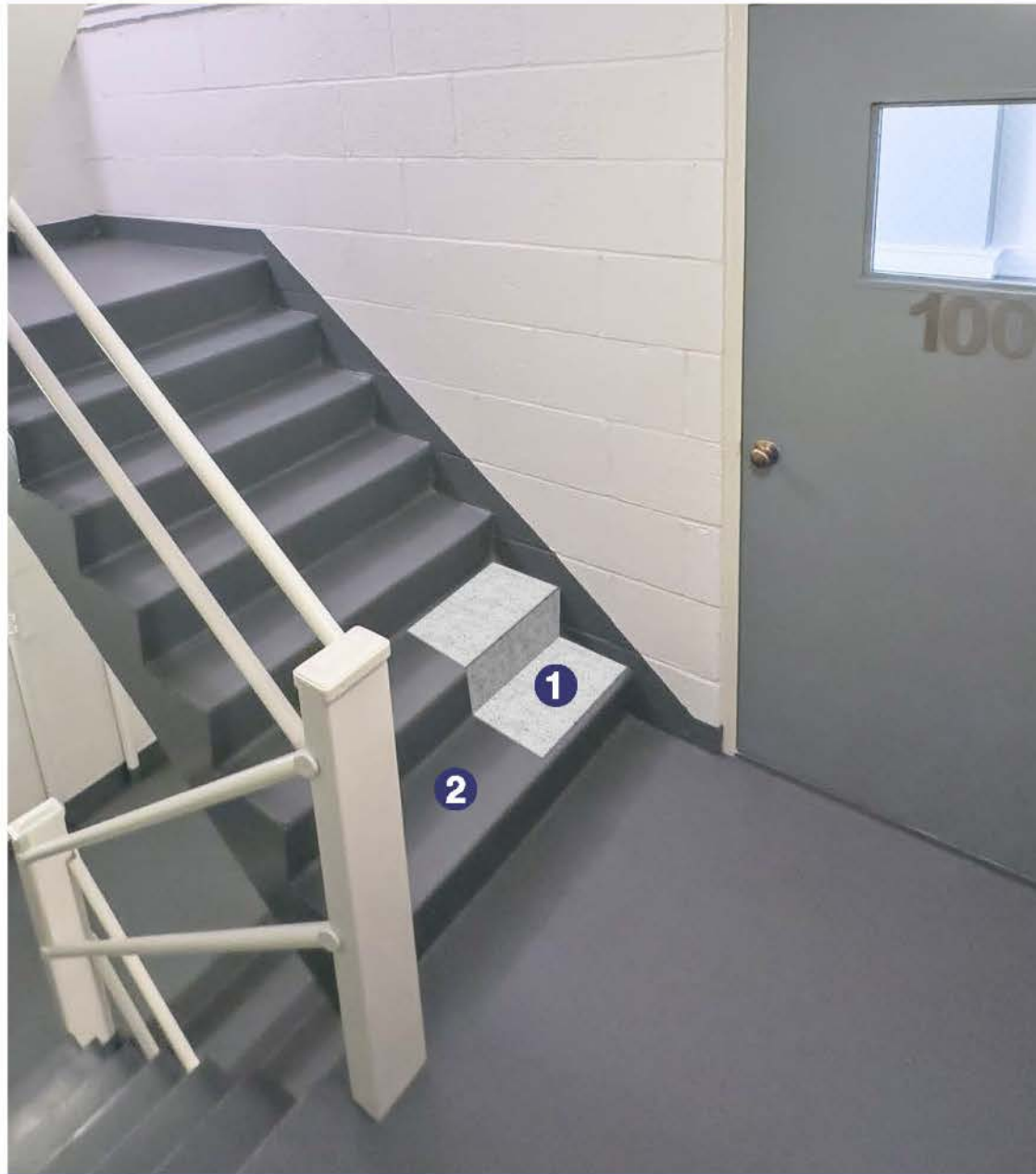
SLIP-RESISTANCE RESULTS:

WET - 0.85 DCOF
DRY - 0.70 DCOF

Non-skid PU Floor Coating Designed for Areas with Light to Medium Traffic such as Stairs and Access Ramp

1 Substrate

2 **Stopslip Grip**
Non-Skid PU Floor Coating



STOPSLIP GRIP

Non-Skid PU Floor Coating

STOPSLIP GRIP is a modified polyurethane floor coating formulated for high performance and resistance to abrasion. Special kinds of aggregates were added to offer anti-slip for protection against harmful or dangerous slips on dry and wet floorings.

Consumption: 1.5 kg/sqm at 500 microns DFT

Recommended: • For basement floors, porch, decks, patio, steps, hallway, and other floor applications

Ready-to-Use Thermoplastic-Acrylic Reflectorized Coating Designed for Road Markings

IF **35**



Concrete/Screed **1**

Flootek Tarc
Thermoplastic Acrylic
Reflectorized Coating **2**



FLOORTEK TARC

Thermoplastic Acrylic Reflectorized Coating

FLOORTEK TARC is an acrylic, solvent-based paint used to mark roads. It is fast-drying and durable; it can withstand the wear-and-tear on roads or floors with heavy traffic. It contains reflectorized glass beads that are premixed on paint for better visibility on the road.

FLOORTEK TARC is a Cold-Applied Thermoplastic Reflectorized Coating that does not require machines to apply the glass beads.

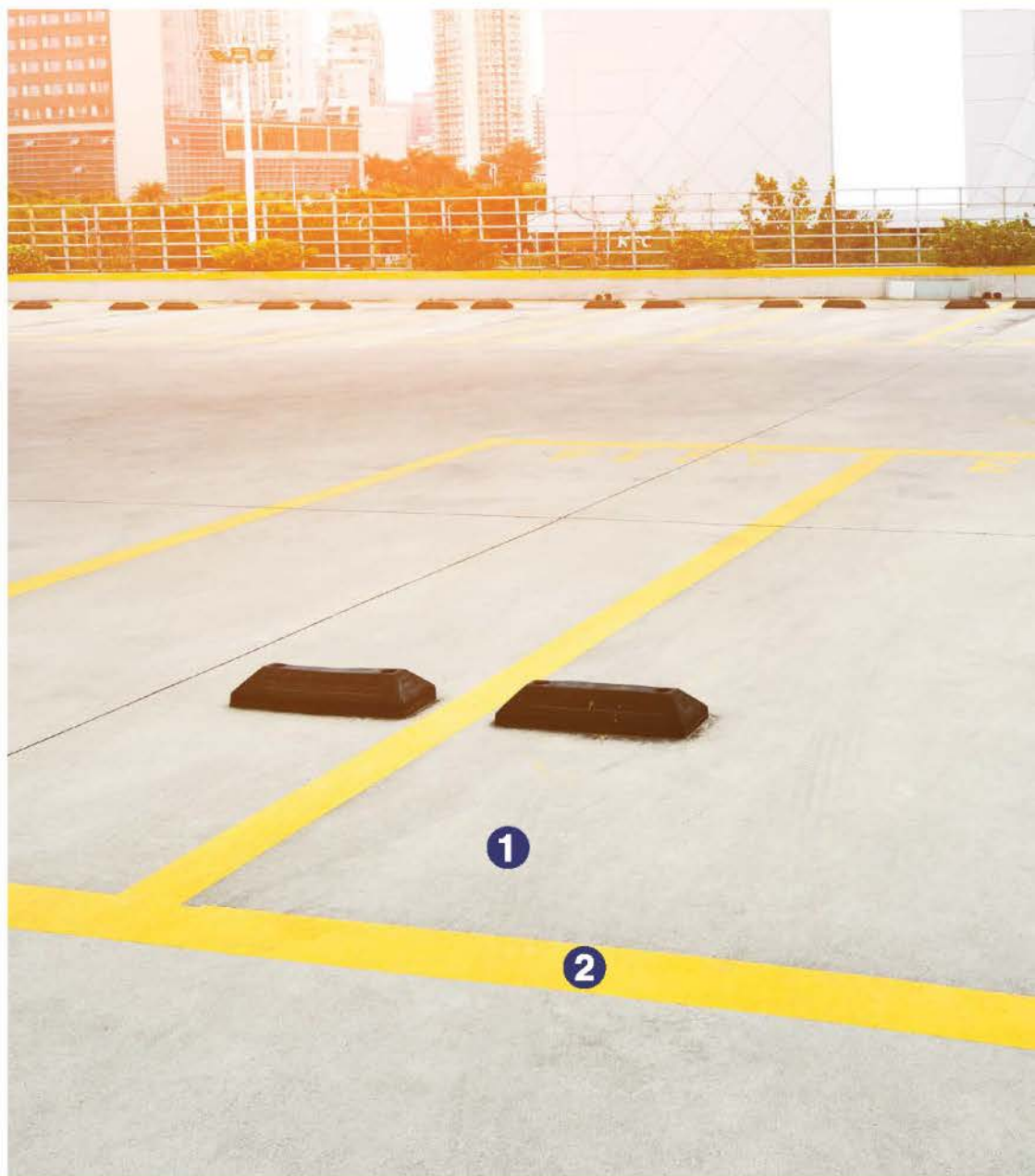
Consumption: 0.20 kg/sqm at 75 microns DFT

Recommended:

- Concrete flooring
- Asphalt
- Plastered wall

1 Substrate

2 Floortek TAC Traffic Acrylic Coating



FLOORTEK TAC

Traffic Acrylic Coating

FLOORTEK TAC is a solvent-based paint used for road markings. It is fast-drying, durable and has excellent wear-and-tear resistance. It can also be used on parking areas with heavy traffic.

FLOORTEK TAC is a cold-applied traffic paint that does not require machines to apply it. It is relatively easier to apply compared to hot-applied traffic coatings.

Consumption: 0.20 kg/sqm at 50 microns DFT

Recommended:

- Concrete flooring
- Asphalt
- Plastered wall

Polyurethane Mortar Designed for Areas with Medium to Heavy Traffic such as Food Manufacturing Plant

IF37



Concrete/Screed **1**

Floortek Polycoat Mortar MD

Thick Polyurethane Mortar
Medium Build 500µm to 1mm
Scratch coat Thickness **2**

Floortek Polycoat Mortar MD

Thick Polyurethane Mortar
Medium Build 3-5 mm **3**

2 SCRATCH COAT
(500µm to 1mm)

3 TOPCOAT
(3mm to 5mm)

1



FLOORTEK POLYCOAT MORTAR MD

Thick Polyurethane Mortar Medium Build 3-5 mm

FLOORTEK POLYCOAT MORTAR is a 3-5 mm thick self-leveling polyurethane mortar floor topping. It has an attractive smooth, matte, colored floor finish with high abrasion resistance and excellent chemical resistance. It is suitable for dry and semi-wet areas where a seamless finish and a long-lasting floor are needed.

Packaging: 12 kg set

Consumption: 2.83 sqm / 17.2 kg set at 3 mm thickness
2.125 sqm / 17.2 kg set at 4 mm thickness
1.7 sqm / 17.2 kg set at 5 mm thickness

Recommended: Kitchen floors, Cold storage, Meat processing, Supermarkets, Catering and laundry areas, Clean rooms, Warehouses

Mixing: Mixing should be carried out using a forced action mixer or a heavy-duty, slow-speed drill fitted with a spiral mixing paddle. Transfer Part A into a mixing container then add Part D (colorant) and mix thoroughly for 1 minute. Add Part B and mix at a low speed for at least 1 minute until uniform. Add Part C slowly while stirring. Continue mixing for another 2 minutes until the four components are mixed thoroughly. Frequently scrape the sides and bottom of the mixing container during mixing to ensure no unmixed components. Thin the mixture before application using Part E (thinner) for good flow and ease of application

Scan to download your 2025 Solution Guide E-Catalogue



SCAN ME!

