



CONCRETE SOLUTIONS

TRANSFORMING
BOUNDARIES
TO BREAKTHROUGHS.



2025 PRODUCT CATALOGUE



A premier Filipino construction chemical company, known for pioneering innovation and advocating for the right construction chemical products and methodologies. We are dedicated to advancing the standards of construction in the Philippines, aiming to achieve world-class quality through our cutting-edge solutions.

Our mission is to educate and empower through innovative, cost-efficient, reliable, and sustainable construction chemical technologies with a vision of being the prime advocate for continuous advancements, shaping a future where the Philippines achieves world-class standards. Guided by our core values—Hiya (integrity and pride), Malasakit (concern for people and organization), Tiya (resilience), and Malikhain (innovation and entrepreneurial spirit)—we drive progress in the industry.

With over 22 years of expertise, we have evolved into a leader in construction chemical manufacturing and distribution. Our 3.5-hectare headquarters in Santa Maria, Bulacan, features state-of-the-art infrastructure and a 164.45-kilowatt solar photovoltaic system, reflecting our commitment to sustainability. Our 19,000-square-meter warehouse and production facility ensures efficiency in storage, manufacturing, and distribution, guaranteeing timely delivery to meet customer demands. Backed by ISO 9001:2015 certification, we uphold the highest standards in quality and service.

Magna Prime's commitment to excellence is evident in its accolades. CEO Derrick Tan received the Agora Award for Outstanding Achievement in Entrepreneurship for his visionary leadership and marketing innovations. He was also recognized as a Top Innovator at the 4th Mansmith Innovation Awards 2024 for his contributions to chemical product innovation.

With a strong nationwide presence, we continue expanding our Buildrite Hubs and Sinclair Pro Stores, supported by distributors and Modern Trade partners across North and South Luzon. Our growing network ensures accessibility, excellent service, and continued innovation in the construction industry.



TABLE OF CONTENTS

CS11	- Lithium Base Densifier and Hardener Sealer for Old and Non-Concrete.....	4
CS12	- Sodium Silicate Base Densifier and Dustproofer Sealer for Light Dusting Concrete	5
CS13	- Penetrating Epoxy Base Densifier for Areas with Heavy Dusting.....	6
CS14	- Fast-Setting Epoxy Bonding Agent for Concrete Piles	7
CS15	- Solvent Free Moisture Barrier Epoxy-based Primer for Ground Level Floors	8
CS16	- Water-based Epoxy Primer for Concrete and Elevated Areas.....	9
CS17	- Horizontal and Vertical Scratch coat for Smooth Surfaces and Tiles.....	10
CS18	- For Structural Crack Repairs.....	11
CS19	- For Fastening Rebars, Pipe Hangars, Threaded Rods, Anchor Bolts.....	12
CS20	- For Critical Grouting Operation & Honeycomb Repair.....	13
CS21	- Vertical & Overhead Spalled Concrete Repair Work	14
CS22	- Resurfacing, Patching, Reprofiling Slab	15
CS23	- Rectification of Roughness, Pinholes and Minor Defects on Concrete Floors (3mm with 3,000psi for Light Duty).....	16
CS24	- For High Strength Concrete Repair with 8,000 PSI @ 3mm Thickness.....	17
CS25	- Non-Paintable Wax-based Curing Compound.....	18
CS26	- Paintable Emulsion-based Curing Compound	19
CS27	- Underlayment for Leveling Floors Before Installing Floor System	20
CS28	- Low Viscosity Concrete Epoxy for Horizontal Application	21
CS29	- Epoxy Bonding Agent for Metal to Concrete Topping & Cement Look of Steel, Aluminum, Galvanized Steel, Wood Substrate.....	22
CS30	- For High-strength Epoxy-based Grout.....	23
CS31	- Footing, Pedestal that Requires 4,000 or 6,000 psi Compressive Strength.....	24
CS32	- High-strength Reinforcement to Structural Members that Requires Retrofitting	25
CS33	- Flexural Strengthening of Beam	26
CS34	- Footing, Pedestal for Underwater Application that Requires 4,000 or 6,000 psi Compressive Strength	27
CS35	- Smoothing Epoxy Putty for Pin Holes 1mm thickness at 8,000 psi	28
CS36	- Filler Putty for concrete Build up to 10mm thickness at 8,000 psi.....	29
CS37	- Chemical Release Agent for Formworks	30
CS38	- Rapid Setting Mortar for Pavement and Floors.....	31
CS39	- Non-Metallic Surface Hardener	32
Product Details	33

1 Concrete

2 Surfix D

Densifier, Surface Hardener and Sealing Compound for Concrete Floor



SURFIX D

Concrete Surface Densifier

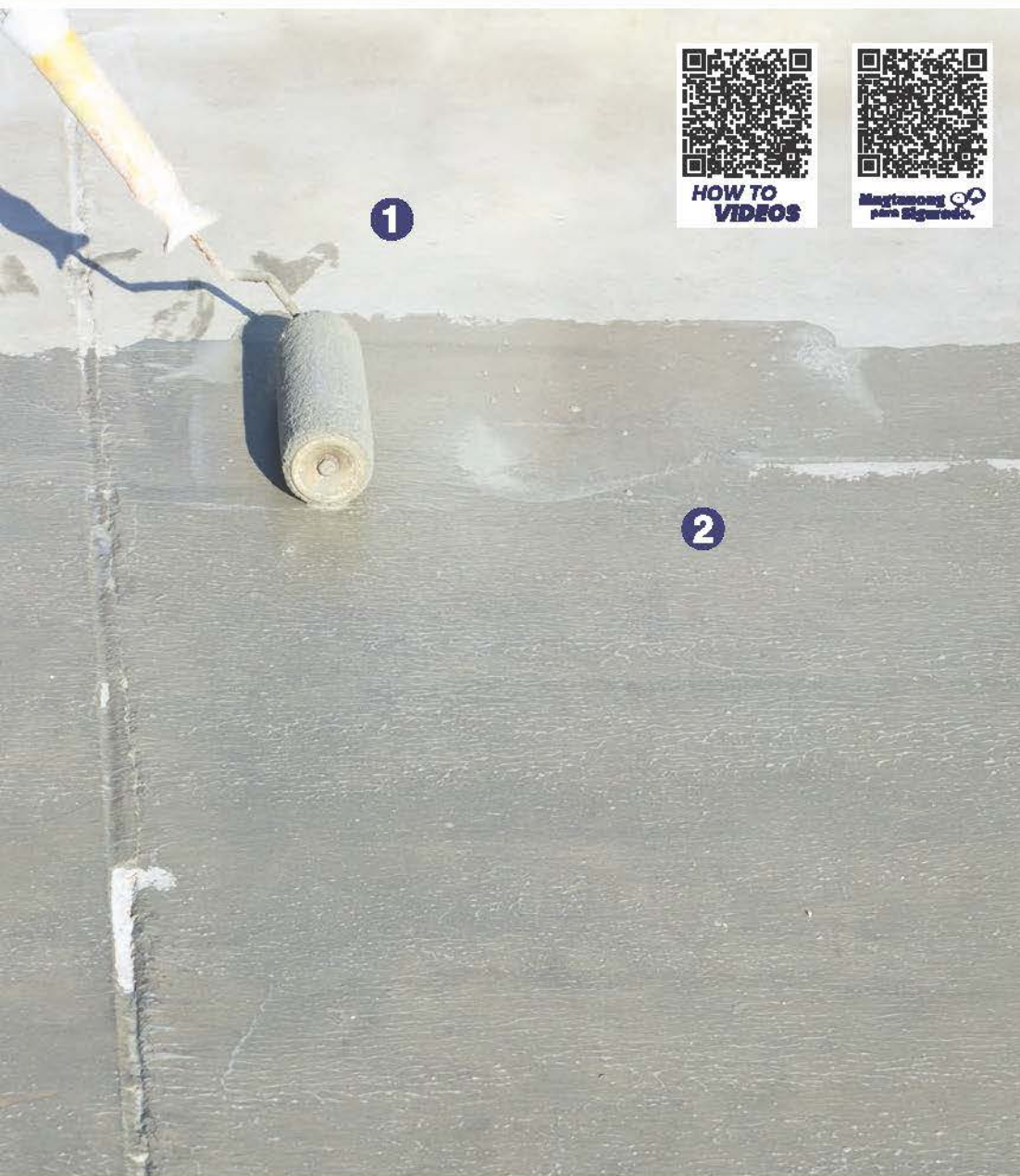
SURFIX D is a proprietary blend of silicates formulated specifically for concrete surface densifiers and hardeners for new and old concrete floors.

Packaging: 20 kg carboy

Coverage: 6-10 m² per liter

Sodium Silicate Base Densifier and Dustproofer Sealer for Light Dusting Concrete

CS12



Concrete **1**

Surfix DP

Liquid Dust Proofer,
Hardener, and Sealer
for Concrete

2



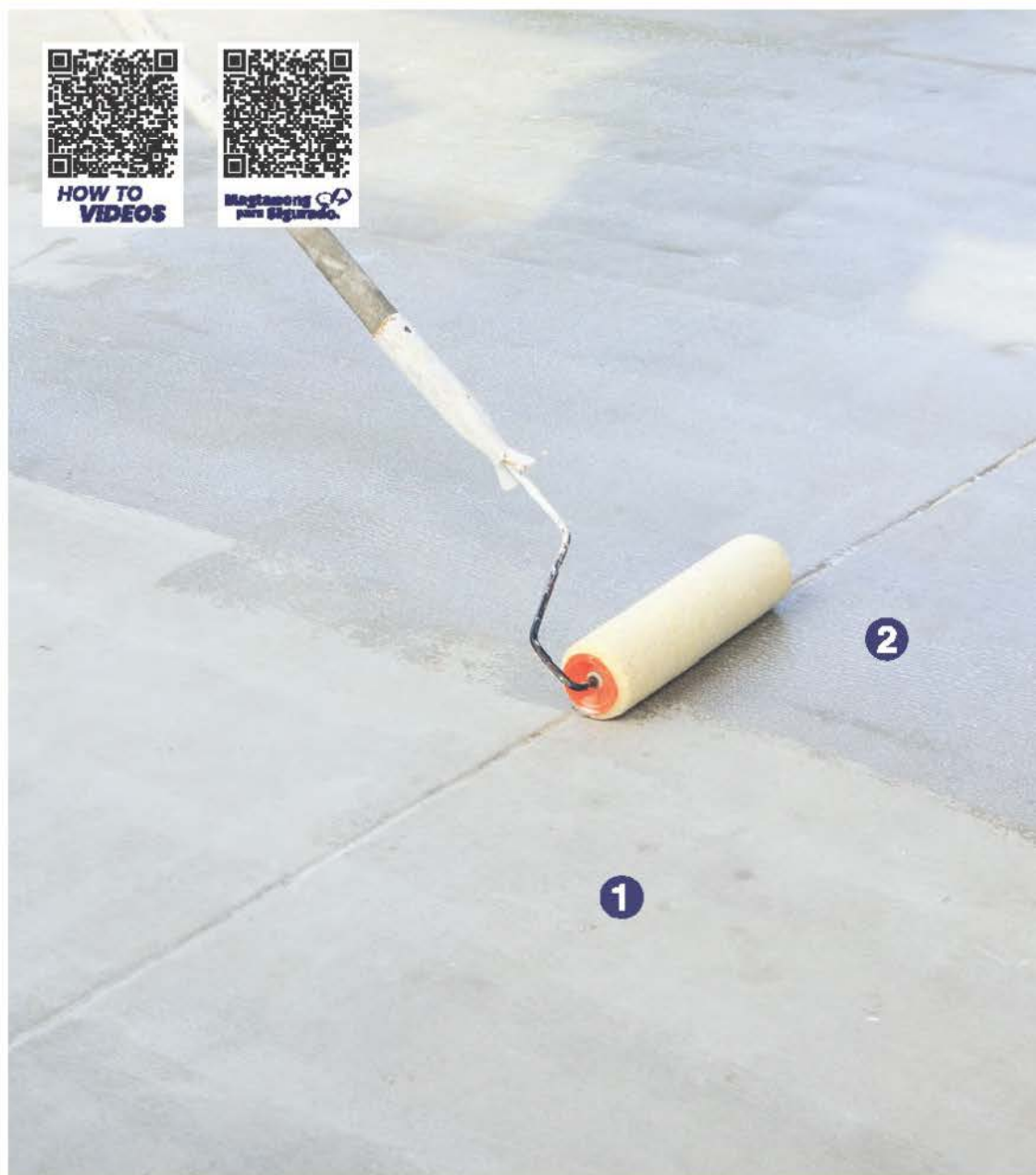
SURFIX DP

Liquid Dust Proofer and Hardener for Concrete

SURFIX DP is a single-pack, concrete surface dust proofer and hardener for new and old concrete floors. SURFIX DP is based on sodium silicate, when applied to concrete reacts chemically to produce a hard, dust-free finish. It is supplied as a ready-to-use liquid.

Packaging: 20 kg carboy

Coverage: 6-10 m² per liter

1 Concrete**2** **Surfix PE**
Two-Component
Penetrating Epoxy Sealer**SURFIX PE****Two-component Penetrating Epoxy**

SURFIX PE is a two-component epoxy coating specially formulated for concrete sealer applications. It is low-viscous and seeps thoroughly into the concrete surface providing an effective line barrier against water and other liquid intrusions.

Packaging: 4kg Gallon Set

Coverage: As Primer: 25m² per gallon set
Saturating Coat: 6m² per gallon set
Top Coat (25mils): 10m² per gallon set

Mixing: Mixing ratio (4 Parts A) : 1 Part B



Pile **1**

Surfix FSE **2**
Fast Setting Epoxy



SURFIX FSE Fast Setting Epoxy

SURFIX FSE is a three-component, 30-minute fast-setting epoxy resin formulation with high chemical and physical strength designed primarily for bonding concrete piles. The cured epoxy resin product provides high compressive and flexural strength to the joined when used with fine aggregates as filler.

Packaging: 8kg Set

Coverage: 1.8 kg/m² at 1mm thickness

Mixing: Measure enough quantities of resin base, hardener, and filler to be used. Sand should always be dry, clean, and bagged. Mix thoroughly resin base with sand then add the hardener.

Solvent Free Moisture Barrier Epoxy-based Primer for Ground Level Floors

1 Substrate

2 Surfix Epocoat MB Solvent Free Moisture Barrier Primer



SURFIX EPOCOAT MB

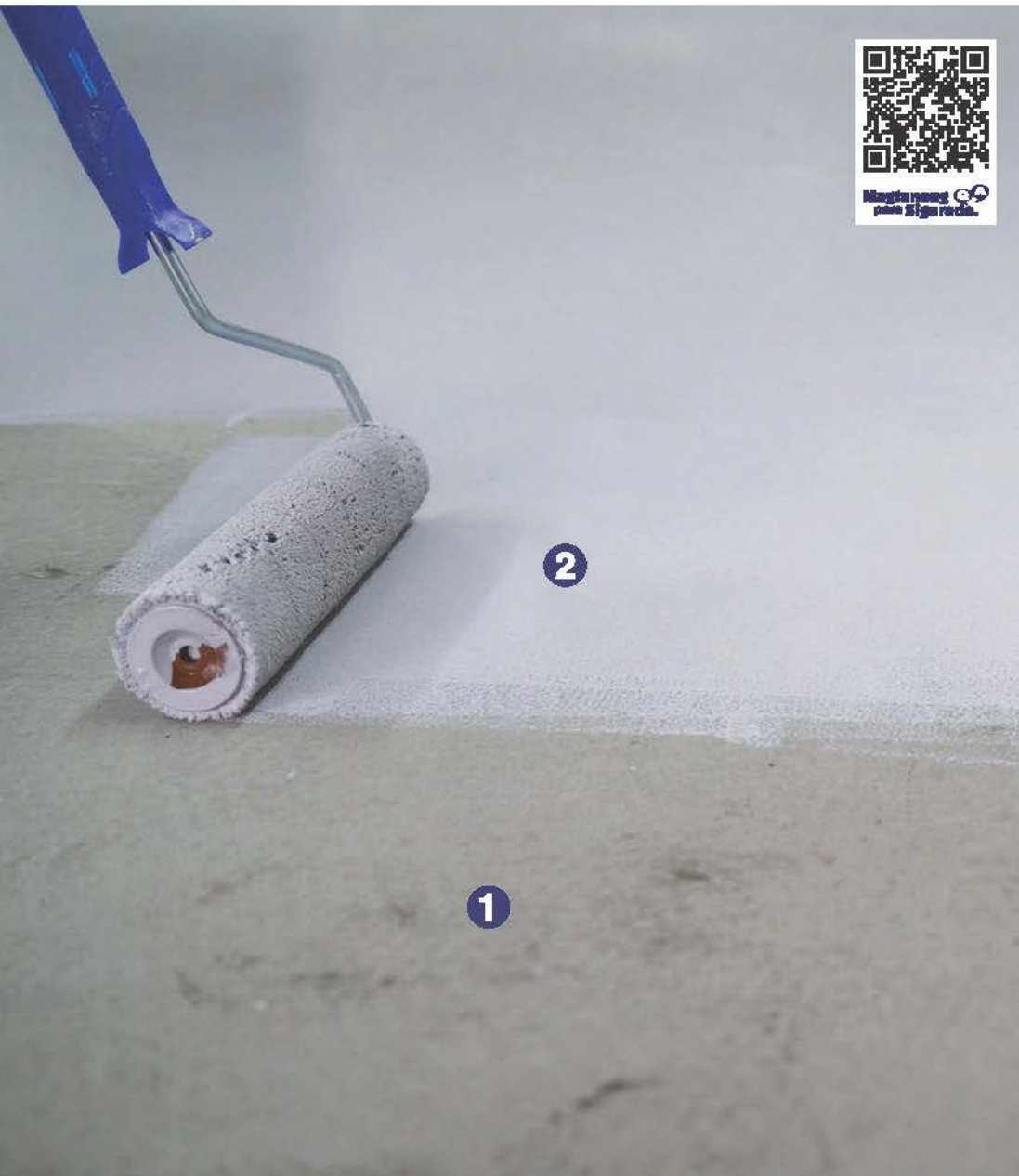
Solvent Free Moisture Barrier Primer

SURFIX MB WHITE is a two-component, 100% solid epoxy specially formulated as a high-strength primer for use in priming all concrete surface and steel prior to the application of any resin-based floor coatings and toppings.

Packaging: 3.8 kg gallon set

Coverage: 13-14 sq.m per 3.8 kg gallon set at 250 microns thickness

Mixing: Stir individual components before mixing. Add Part B to Part A and mix thoroughly until uniformly blended to a workable consistency. Use the mixture immediately. Do not mix more material than can be used within the expected pot life. No thinner is required.



Pile **1**

Surfix WB **2**
Water-based Epoxy Primer
for Concrete



SURFIX WB

Water-based Epoxy Primer for Concrete

SURFIX WB is a two-component water-based epoxy that acts as a multifunctional primer. It is a great choice to seal new and old concrete surfaces to prevent out gassing and air bubbles from transmitting through subsequent coatings.

Packaging: 4kg gallon set

Coverage: 5-6m² /liter @ 50 microns DFT (100 microns WFT)

Mixing: Mix thoroughly Part B after opening the container. Afterwards, mix one Part A (resin) into five Parts B (hardener), manually or by mechanical mixer. Ensure that Part A is thoroughly mixed with Part B. Only mix the amount of product that can be properly applied within less than 2 hrs.

1 Substrate

2 Surfix SCA Scratch Coat Acrylic



SURFIX SCA

Rendering Bonding Agent

SURFIX SCA is a 1K acrylic rendering bonding agent that contains aggregates to improve mechanical adhesion on substrates especially on smooth surfaces.

Packaging: 4kg Container

Coverage: 1.80 – 2.00 m² per liter at 0.5mm thickness
7.20 – 8.00 m² per 4 liters at 0.5mm thickness



Concrete Slab **1**

Copper Tube **2**

Confix Concrete Epoxy HV
Non sag, High Viscosity
Concrete Epoxy for Vertical
Application **3**

Confix IJ
Low Viscosity Structural
Epoxy Resin for Crack
Injection Repairs **4**



CONFIX CONCRETE EPOXY HV

Non-sag High Viscosity Epoxy Bonding Agent for Old to New Concrete

CONFIX CONCRETE EPOXY HV is a high-viscous epoxy adhesive designed for vertical application between old to new concrete, which sets permanently upon curing.

Packaging: Available in an 7Liter/gallon set and a quart set.

Coverage: 1 gallon set : 10m² at 1mm thickness

Tensile Strength: 3,000 500psi (Minimum) ASTM 638

Flexural Strength: 7,000 500psi ASTM D79

Compressive Strength: 8,500 500psi ASTM D695

Mixing Ratio: (A:B): 1:1 by volume

Mix equal volumes of Part A and Part B. Blend well until a uniform color is obtained. To avoid wastage, prepare only the amount consumable within one (1) hour.



CONFIX IJ

Low Viscosity Structural Epoxy Resin for Crack Injection Repairs

CONFIX IJ is a two-component, low-viscous epoxy injection resin ideal for the repair of structural cracks and eliminates cold joints in concrete.

Packaging: 3kg set and 450ml cartridge.

Compressive Strength: (ASTM D695)
1 day : 3,000 – 4,000 psi
7 days : 8,000 – 10,000 psi
28 days : 10,000 – 12,000 psi

Mixing Ratio: 2 parts of A (base) 1 part of B (hardener)

1 Confix Anchor Chemical Anchor Structural Epoxy



1. Drill a hole



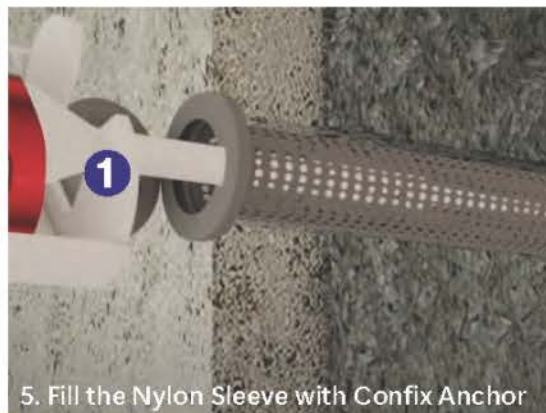
2. Clean the hole using a blow pump



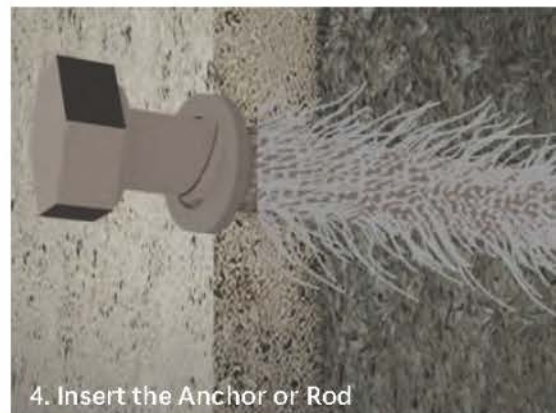
3. Use the Nylon Brush to further clean



4. Insert the Plastic Sleeve



5. Fill the Nylon Sleeve with Confix Anchor



4. Insert the Anchor or Rod



HOW TO
VIDEOS



Magtanong
para Sigurado.



CONFIX ANCHOR Injection Anchoring Adhesive

CONFIX ANCHOR is a two-part styrene-free, high-strength, fast-curing anchoring adhesive for fastening any grade of rebars, pipe hangers, threaded rods, and anchor bolts.

Packaging: 450 mL/set

Compressive Strength: (ASTM D695) : 15,000 psi

Tensile Strength: (ASTM D790) : 2,000 psi

Pull-off Strength: (ASTM D1002) : 1,500 psi

Mixing Ratio: 2 parts A : 1 part B

Consumption Chart

Anchor Rod ϕ	M10	M12	M16	M20	M24
Drilling ϕ (mm)	12	14	18	24	28
Depth (mm)	90	110	145	180	220
Each Usage	4mL	6mL	10mL	31mL	44.9mL
450mL	75	46	24	12	8.40



BLOW PUMP

Uses:

removes dust on drilled holes prior to application of Confix Anchor

Dimension: 320x190mm

Material: Plastic



Pedestal **1**

Solid Cure
Non-Shrink Self Levelling
Cementitious Grout **2**

Concrete
Honeycomb **3**

Base Plate **4**



SOLIDCURE

Non-Shrink Self Leveling Cementitious Grout

SOLIDCURE is a non-shrink, cement-based, high-strength developing grout that is specially formulated for use in critical grouting operations and concrete spalling repair where positive expansion and self-leveling characteristics are required.

Packaging: 25 kg bag

Coverage: Flowable at 4.0-4.5 L of water: 13.5L of grout
Trowelable at 3.3-3.5 L of water: 12.2L of grout

Compressive Strength: ASTM C109/ C109M 1 day 3,500 psi 7 days 7,500 psi 28 days 8,000 psi

Mixing: Measure the required amount of water accurately and add to the mixer. SOLIDCURE and continuously mix for 5 minutes or until the right consistency is achieved. An exact and uniform mixing duration is recommended for each operation to obtain consistent results.

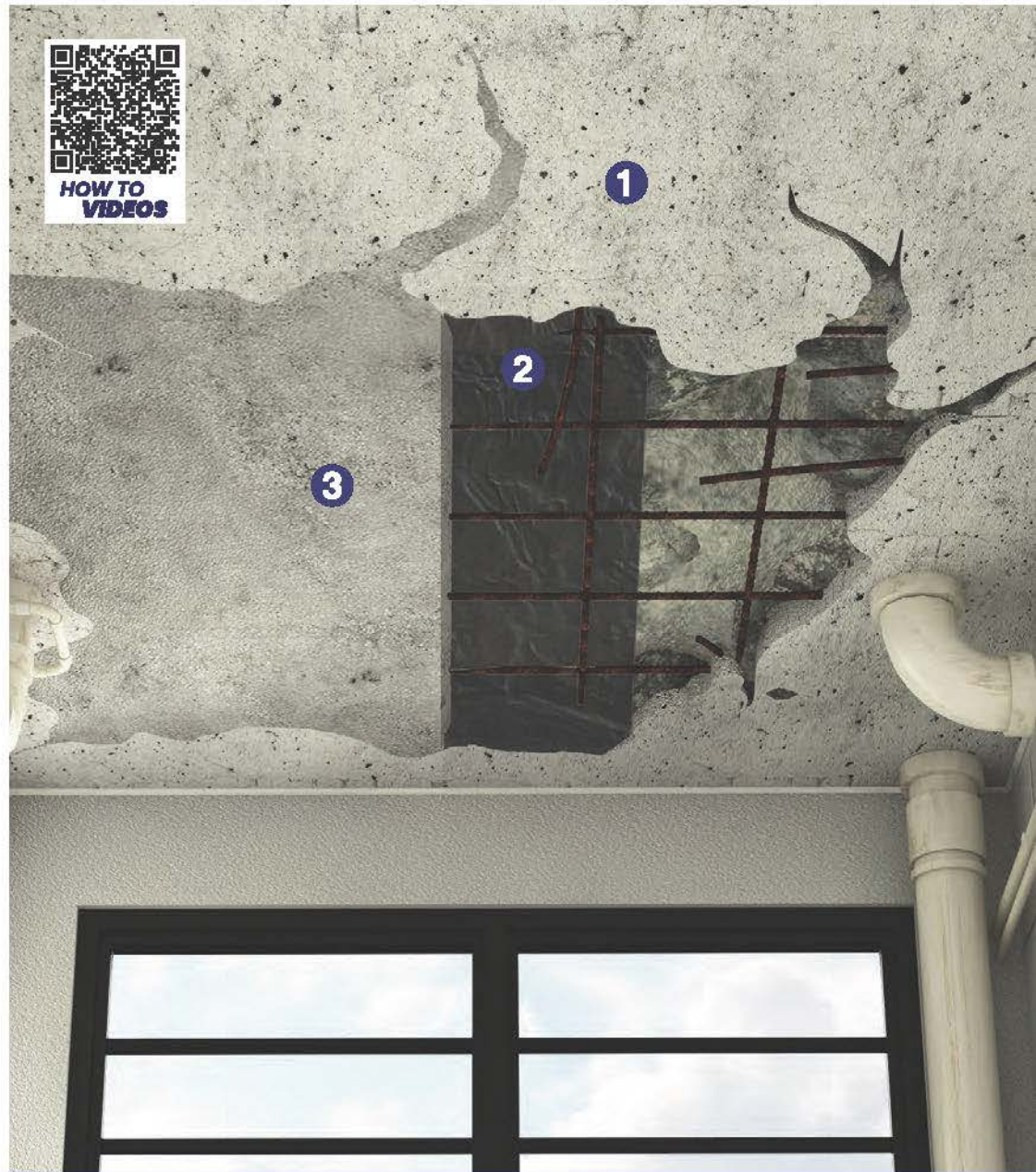
1 Concrete Ceiling

2 Confix Concrete Epoxy HV

Non sag, High Viscosity Concrete Epoxy for Vertical Application

3 Concrete Patch V

Non Sag Repairs Mortar for Vertical Application



CONFIX CONCRETE EPOXY HV

Non-sag High Viscosity Epoxy Bonding Agent for Old to New Concrete

CONFIX CONCRETE EPOXY HV is a high-viscous epoxy adhesive designed for vertical application between old to new concrete, which sets permanently upon curing.

Packaging: Available in an 7liter/gallon set and a quart set.

Coverage: 1 gallon set : 10m² at 1mm thickness

Tensile Strength: 3,000 500psi (Minimum) ASTM 638

Flexural Strength: 7,000 500psi ASTM D79

Compressive Strength: 8,500 500psi ASTM D695

Mixing Ratio: (A:B): 1:1 by volume

Mix equal volumes of Part A and Part B. Blend well until a uniform color is obtained. To avoid wastage, prepare only the amount consumable within one (1) hour.



CONCRETE PATCH V

Non-sag Repair Mortar for Vertical Application

CONCRETE PATCH V is a cementitious pre-packed repair mortar with shrinkage compensation properties.

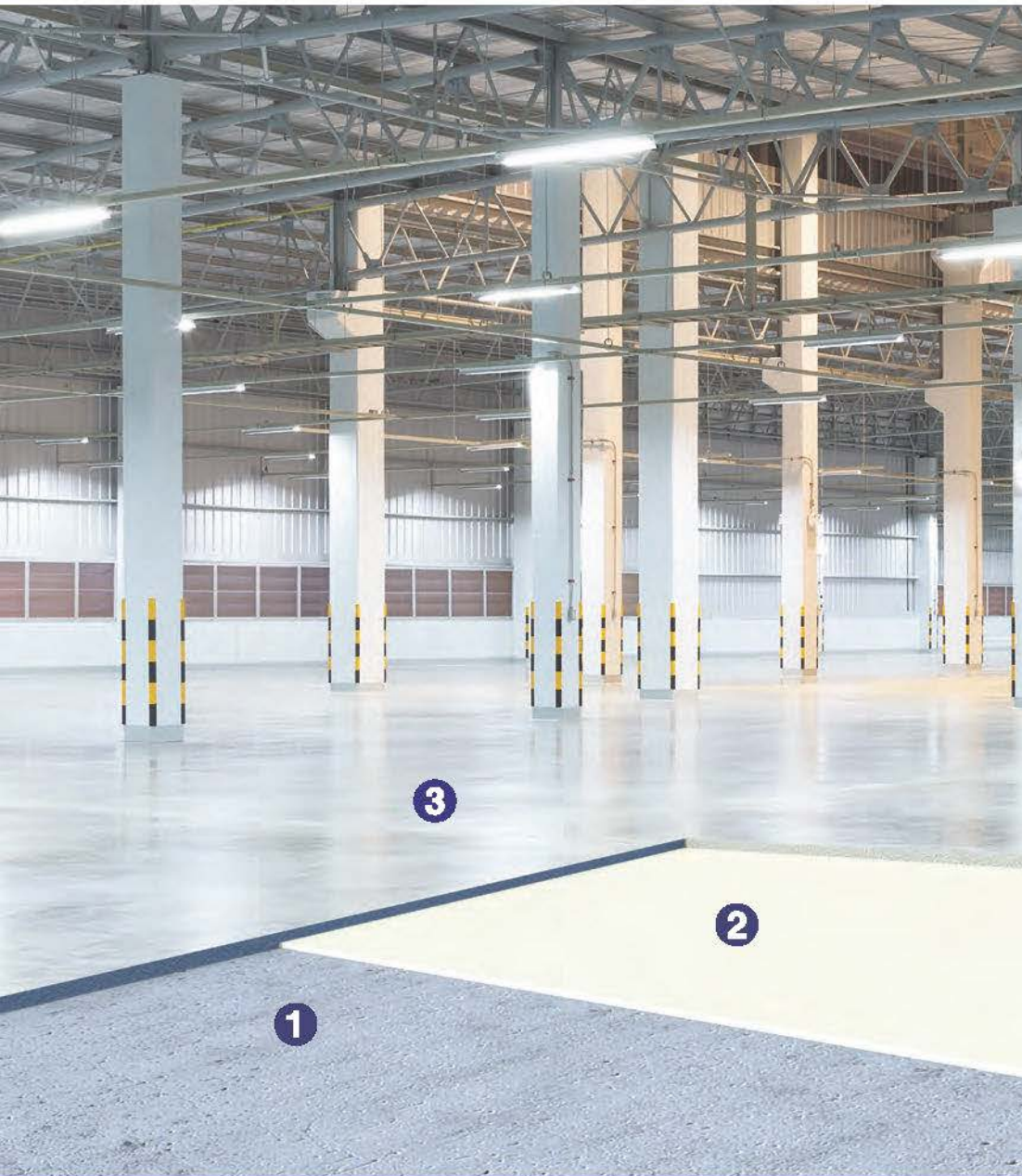
Packaging: 25 kg per bag

Coverage: A 25 kg bag of CONCRETE PATCH V mixed with 5.5-6 liters of water yields 16.5 liters (0.0165m³). This will cover an area of 1.6 m² at 10mm thick.

Compressive strength:(ASTM C109 / C109M -13) 28 days : 5,800 psi

Mixing: Small quantities of up to 10 kg may be mixed manually in a bucket, not on a spot board. It is advisable to add powder to water. Two minutes of hand-mixing can produce a smooth mortar with the aid of a trowel or spatula.

Above 10 kg should be mixed mechanically by a slow-speed drill with a loop paddle. For normal applications, use 5.5-6 liters (maximum of 6 liters) of water per 25kg per bag depending on the desired consistency.



Substrate **1**

Surfix Harcdrete Fix

Hi-Performance Concrete
Bonding Agent for Screed
Topping and Repair Mortar

2

Hardcrete

Formulated Screed for Thin
Topping and Concrete Repair

3



SURFIX HARDCRETE FIX

Hi-Performance Concrete Bonding
Agent for Screed Topping and Repair
Mortar

SURFIX HARDCRETE FIX is a polymer-based bonding agent for cementitious systems like floor toppings, renders, and repair mortars. It is a water-based, non-toxic, medium-viscosity, and ready-to-use emulsion.

Packaging: 4-Liter Container

Coverage: Approximately 5-6 m² /liter



HARDCRETE 310

Cementitious Compound for Re-instatement of
Concrete Pavements 10mm Thickness at 3000 psi

HARDCRETE 510

Cementitious Compound for Re-instatement of
Concrete Pavements 10mm Thickness at 5000 psi

HARDCRETE 620

Cementitious Compound for Re-instatement of
Concrete Pavements 20mm Thickness at 6000 psi

1 Rough Concrete

2 **Hardcrete 303** Skim Mortar Screed 3mm Thickness at 3,000 psi



HARDCRETE 303

Skim Mortar Screed 3mm Thickness at 3000 psi

HARDCRETE 303 is a two-component, skim-smoothing ultra-paste compound specially formulated to be mixed with a select cement blend for rendering and finishing uneven concrete surfaces and pre-cast concrete panels.

Packaging: 20 kg set pail

Coverage: 0.65 – 0.85 kg/m² at 1 mm thickness

Compressive strength: ASTM C109
7 days : 2,500 psi
28 days : 3,200 psi

Mixing: Stir Part A (liquid) before mixing with Part B (powder). Mix equal volumes of Part A and Part B using an electric mixer until a homogenous paste is achieved. No water must be added to the mixture.

For High Strength Concrete Repair with 8,000 PSI @ 3mm Thickness

CS 24



Scaled Concrete 1

Confix EC

3-Part Cement and Epoxy
Combination Mortar for
Self-smoothing Floor Screed
of 1.5 to 3mm Thickness

2



CONFIX EC

3-Part Cement and Epoxy Combination Mortar for Self-smoothing Floor Screed of 1.5 to 3mm Thickness

CONFIX EC is a three-part, epoxy-modified cementitious, fine-textured mortar for self-smoothing floor screeds in thin layers of 1.5 to 3 mm.

Packaging: CONFIX EC is supplied in 3 components consisting of base, hardener, and filler in a 16kg set.

Coverage: 1.64 kg/m² at 1mm thickness
3.28 kg/m² at 2mm thickness
For extended mortar mix: 1.80 kg/m² at 1mm thickness

Mixing: Pour Part A and Part B into a suitable mixing container. Mix well until uniform color is obtained. Add gradually Part C to the solution while stirring with a slow-speed electric mixer. Mix thoroughly until a uniform mix has been achieved with no lumps. Mix only full units of A+B+C components. Do not mix smaller amounts. Do not add water.

1 Fresh Concrete**2** Curesil WB
Wax Base Curing Compound**CURE SIL WB****Curing Compound Wax Base**

CURE SIL WB is a ready-to-use liquid curing compound based on selected grades of paraffin wax which when applied to surfaces of newly placed concrete, assists in the retention of water during hydration.

Packaging: 20 liters pail and 200 liters drum

Coverage: 5 - 6m² per liter.



Fresh Concrete **1**

Curesil EB
Emulsion Base Curing Compound **2**



CURE SIL EB

Curing Compound Emulsion Base

CURE SIL EB is a polymeric emulsion, which has been formulated to act as a highly efficient curing membrane on freshly placed concrete to ensure maximum strength development and assist in the retention of water during hydration.

Packaging: 20 liters carboy and 200 liters drum

Coverage: 5 - 6m² per liter.

Underlayment for Leveling Floors Before Installing Floor System

1 Concrete

2 **Surfix Cement Grip**
Bonding Agent and Adhesion
Enhancer for Mortar

3 **Level Up**
Self-Levelling Topping

4 **Smartbond Flex
Gold**
Tile Adhesive with Improved
Flexibility C2E S1

4 Porcelain Tiles



PRODUCTS



**SURFIX
CEMENT GRIP**



**SMARTBOND
FLEX GOLD**



**LEVEL UP
403/410**



Substrate **1**

Confix Concrete Epoxy LV **2**

Low Viscosity Epoxy Bonding Agent for Metal to Concrete

Hardcrete **3**

Formulated Screed for Thin Topping and Concrete Repair



CONFIX CONCRETE EPOXY LV

Low Viscosity Epoxy Bonding Agent for Old to New Concrete

CONFIX CONCRETE EPOXY LV is designed to have a low-viscosity property. This consistency, pourable and self-leveling, makes it suitable for large areas of application of old to new concrete i.e., elevating floorings and patching damaged or degraded concrete structures.

Packaging: Available in a 7 Liter/gallon set and a quart set.

Coverage: 1 gallon set: 17-22sqm @100microns DFT

Tensile Strength: 2,000 ± 500 psi (Minimum) ASTM 638

Compressive Strength: 10,500 ± 500 psi ASTM D695

Mixing Ratio: (A:B) 1:1 by volume Mix equal parts by volume of Part A and Part B. Blend well until uniform color is obtained. Add inert fillers of aggregates into the mixture and blend well.



HARDCRETE 310

Cementitious Compound for Re-instatement of Concrete Pavements 10mm Thickness at 3000 psi

HARDCRETE 510

Cementitious Compound for Re-instatement of Concrete Pavements 10mm Thickness at 5000 psi

HARDCRETE 620

Cementitious Compound for Re-instatement of Concrete Pavements 20mm Thickness at 6000 psi

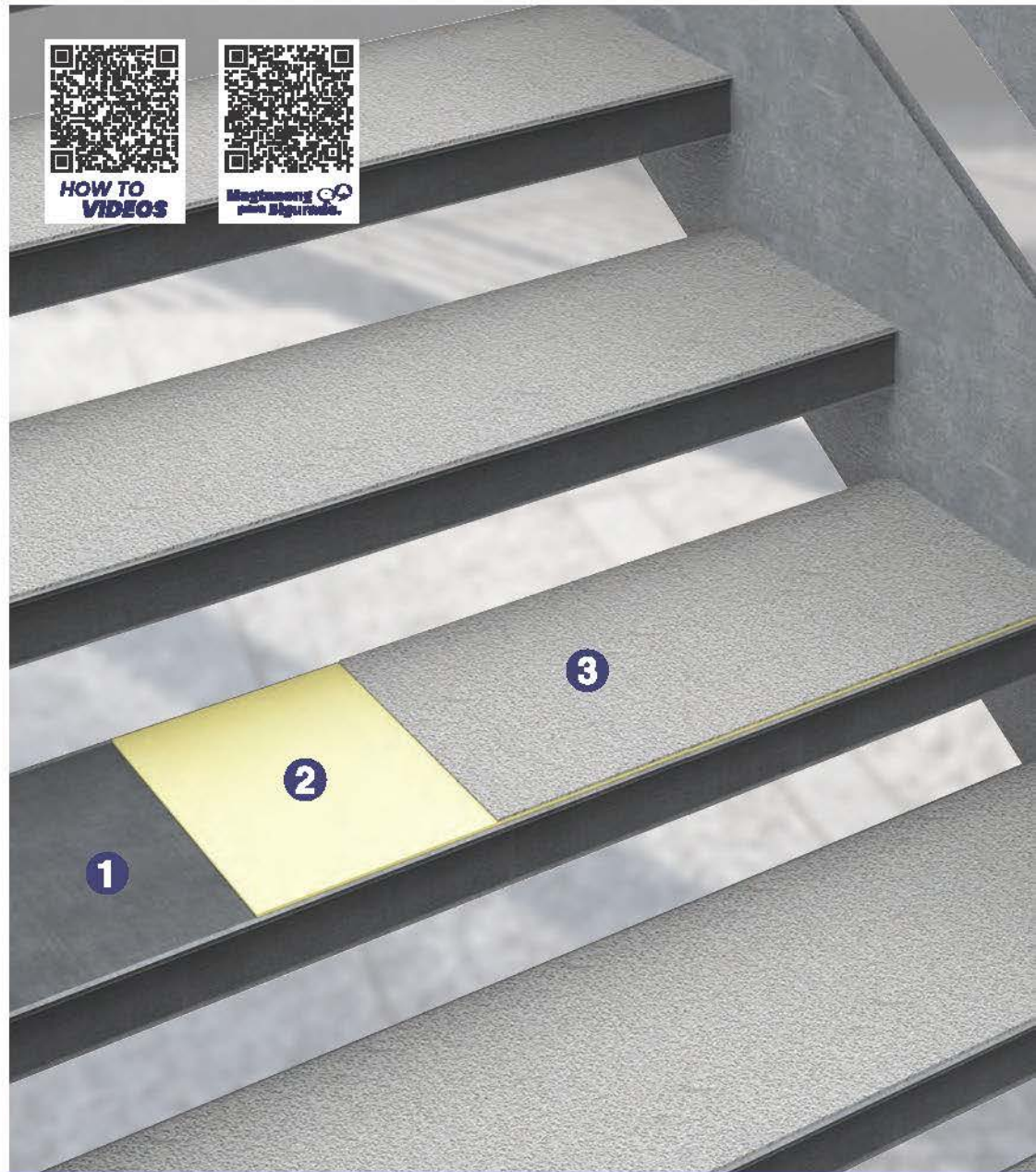
1 Metal

2 Confix Concrete Epoxy LV

Low Viscosity Epoxy Bonding Agent for Metal to Concrete

3 Elastocrete

Flexible Self-Leveling Mortar



CONFIX CONCRETE EPOXY LV

Low Viscosity Epoxy Bonding Agent for Old to New Concrete

CONFIX CONCRETE EPOXY LV is designed to have a low-viscosity property. This consistency, pourable and self-leveling, makes it suitable for large areas of application of old to new concrete i.e., elevating floorings and patching damaged or degraded concrete structures.

Packaging: Available in a 7 Liter/gallon set and a quart set.

Coverage: 1 gallon set: 17-22 sqm @ 100 microns DFT

Tensile Strength: 2,000 ± 500 psi (Minimum) ASTM 638

Compressive Strength: 10,500 ± 500 psi ASTM D695

Mixing Ratio: (A:B) 1:1 by volume Mix equal parts by volume of Part A and Part B. Blend well until uniform color is obtained. Add inert fillers of aggregates into the mixture and blend well.



ELASTOCRETE

Flexible, Self-Leveling Mortar

ELASTOCRETE is a cement-based, flexible, fiber-reinforced self-leveling mortar for concrete floors, steel, galvanized steel, and aluminum decks.

Packaging: 25kg bag

Coverage: 25kg bag will cover approximately 4.9 m² at 3mm thickness and 2.94 m² at 5mm thickness

Compressive strength: 28 days : 3,500 psi

Mixing: Mix a 25 kg bag of ELASTOCRETE with 4.25 to 4.75 liters of clean water. Pour the water into a clean mixing vessel. Add the powder slowly to the water while mixing continuously with a heavy-duty drill fitted with a purpose-made paddle.



Machine **1**

Confix Grout 40
High-Strength Epoxy-Based Grout (12,000 psi) **2**



CONFIX GROUT 40

High-Strength Epoxy-Based Grout for Grouting Machine Base Plates

CONFIX GROUT 40 is a high-strength grout, based on modified epoxy resin. It is used as heavy-duty grout where heavy dynamic, mechanical properties, and chemical resistance of the hardened grout are required.

Packaging: 8 kg set

Coverage: 8 kg set yields 0.004 cubic meters (4 liters).

Compressive strength: 3000 psi at 1 day 8,500 ± 500 psi at 7 days

Mixing: Mixing of CONFIX GROUT 40 products should be carried out as follows:

The base (Part A) and hardener (Part B) should be mixed into the ratio provided and mixed until homogenous. Add the aggregate (Part C) and mix using a slow-speed power mixer for 2 – 3 minutes until a uniform color is achieved.

Footing, Pedestal that Requires 4,000 or 6,000 psi Compressive Strength

1 Rebar Footing

2 Readycrete Ready Mix Concrete



READYCRETE 4K Ready Mix Concrete at 4,000 psi

READYCRETE 4K is a pre-packed, fast setting ready mix concrete for general structural uses. It is a cost and time saving alternative to Ready-Mix Concrete (RMC) and Site-Mix Concrete.

Packaging: 25 kg plastic bag

Coverage: A 25 kg bag yields approximately 0.013 cbm (12.7 L). 77 Bags for 1cbm.

Compressive Strength: ASTM C39
7 days 2,500 psi (17.2 MPa)
28 days 4,000 psi (27.6 MPa)

Machine Mixing: Allow at least 28 L of mixer capacity for each 25 kg bag of READYCRETE 4K to be mixed at one time. For each 25 kg bag of READYCRETE 4K to be mixed, add approximately 2 – 2.25 L of fresh water to the mixer. Turn on the mixer and begin adding the concrete to the mixer. Mix for at least 10 minutes.

Hand Mixing: Empty concrete bags into a suitable mixing container. For each 25 kg bag of READYCRETE 4K to be mixed, add approximately 2 – 2.25 L of fresh water. Work the mix with a shovel, rake or hoe and add water as needed.



READYCRETE 6K Ready Mix Concrete at 6,000 psi

READYCRETE 6K is a pre-packed, fast setting ready mix concrete with a strength of 6,000 psi for general structural uses. It is a cost and time saving alternative to Ready-Mix Concrete (RMC) and Site-Mix Concrete, just add clean water on the proportioned concrete mix.

Packaging: 25 kg plastic bag

Coverage: A 25 kg bag yields approximately 0.013 cu m (12.7 L). 77 Bags for 1cbm.

Compressive Strength: ASTM C39
7 days 3,750 PSI (25.9 MPa)
28 days 6,000 PSI (41.4 MPa)

Machine Mixing: Allow at least 28 L of mixer capacity for each 25 kg bag of READYCRETE 6K to be mixed at one time. For each 25 kg bag of READYCRETE 6K to be mixed, add approximately 2 – 2.25 L of fresh water to the mixer. Turn on the mixer and begin adding the concrete to the mixer. Mix for at least 10 minutes.

Hand Mixing: Empty concrete bags into a suitable mixing container. For each 25 kg bag of READYCRETE 6K to be mixed, add approximately 2 – 2.25 L of fresh water. Work the mix with a shovel, rake or hoe and add water as needed.

High-strength Reinforcement to Structural Members that Requires Retrofitting

CS32



Concrete Column 1

**Confix Laminating
Epoxy Fabric** 2
Epoxy Laminating Resin

**Confix Carbon
Fiber Fabric** 3
Unidirectional Carbon Fiber
Structural Strengthening for
Flexural and Shear
Strengthening



CONFIX CARBON FIBER FABRIC EPOXY

Epoxy Laminating Resin

CONFIX CARBON FIBER FABRIC EPOXY is a two-part clear liquid epoxy system designed specifically for wet lay-up and ambient temperature cure of fiber-reinforced composites, such as aramid (Kevlar), carbon fiber, and glass fibers.

Packaging: 3.8 kg /gallon set
Coverage: 1.7 kg/m² per layer
Tensile Strength: 6,500 psi
Compressive Strength: 8,500 psi
Flexural Strength: 12,500 psi



CONFIX CARBON FIBER FABRIC

High-Performance Carbon Fiber
Sheet for Structural Strengthening

CARBON FIBER FABRIC is a unidirectional carbon fiber sheet for structural reinforcement, manual wrap lamination, and tensile strength reinforcement to structural members.

Packaging: 500mm x 100 meters per roll.

1 Beam

2 Confix Laminating Epoxy Plate

Epoxy Laminating Resin

3 Confix Carbon Fiber Plate

Standard Modulus Carbon Plate Laminates



CONFIX CARBON FIBER PLATE EPOXY

Epoxy Laminating Resin
for Carbon Fiber Plate

CONFIX CARBON FIBER PLATE EPOXY is a two-part thixotropic epoxy system designed specifically for bonding of carbon fiber plate to various substrate like concrete, metal and wood.

Packaging: 3.8 kg per gallon set
Flexural Strength: 12,500 psi
Tensile Strength: 6,500 psi
Compressive Strength: 8,500 psi



CONFIX CARBON FIBER PLATE

Standard Modulus Carbon Plate Laminates

CARBON FIBER PLATE is characterized by high tensile modulus and high tensile strength.

Packaging: CARBON FIBER PLATE is available in 1.2mm thick x 50mm width and wound into 100m coils, sealed in a polyethylene bag, firmly secured, and placed in a cardboard box.

Technical Data: Density 1.6 g/mL
 Tensile Strength* $\geq 1,800$ MPa
 Tensile Modulus* ≥ 145 GPa
 Elongation at break 1.2%

Footing, Pedestal for Underwater Application that Requires 4,000 or 6,000 psi Compressive Strength

CS **34**



Water **1**

Rebar Footing **2**

Readycrete UW
Ready Mix Concrete for Underwater Application **3**



READYCRETE UW 4K Ready Mix Concrete (4,000 psi) for Underwater Application

READYCRETE UW 4K is a pre-packed ready-mix concrete for underwater application. It has increased cohesion of cementitious components in water and has anti-washout properties.

Packaging: 25kg plastic bag

Coverage: A 25 kg bag yields approximately 0.013 cu m (12.7 L). 77 Bags for 1cbm.

Compressive Strength: ASTM C39 28 days 4,000 PSI (27.6 MPa)

Machine Mixing: Allow at least 28L of mixer capacity for each 25kg bag of READYCRETE UW 4K to be mixed at one time. For each 25kg bag of READYCRETE UW 4K to be mixed, add approximately 1.40 – 1.90L of fresh water to the mixer.

Hand Mixing: Empty concrete bags into a suitable mixing container. For each 25kg bag of READYCRETE UW 4K to be mixed, add approximately 1.40 – 1.90L of fresh water. Work the mix with a shovel, rake or hoe, and add water as needed.



READYCRETE UW 6K Ready Mix Concrete (6,000 psi) for Underwater Application

READYCRETE UW 6K is a pre-packed ready-mix concrete for underwater application. It has increased cohesion of cementitious components in water and has anti-washout properties.

Packaging: 25kg plastic bag

Coverage: A 25kg bag yields approximately 0.013cu m (12.7L)

Compressive Strength: ASTM C39 28 days 6,000 PSI (41.4 MPa)

Machine Mixing: Allow at least 28L of mixer capacity for each 25kg bag of READYCRETE UW 6K to be mixed at one time. For each 25kg bag of READYCRETE UW 6K to be mixed, add approximately 1.70 – 2.20L of fresh water to the mixer.

Hand Mixing: Empty concrete bags into a suitable mixing container. For each 25kg bag of READYCRETE UW 6K to be mixed, add approximately 1.70 – 2.20 of fresh water. Work the mix with a shovel, rake or hoe, and add water as needed.

Smoothinging Epoxy Putty for Pin Holes 1mm thickness at 8,000 psi

1 Substrate

2 **Hardcrete 801**
Smoothinging Epoxy Putty
for Pin Holes 1mm thickness
at 8,000 psi



HARDCRETE 801

Smoothinging Epoxy Putty for Pin Holes 1mm Thickness at 8000 psi

HARDCRETE 801 is a two-component, low-viscosity putty compound that forms strong bonds on a wide variety of rigid materials.

Packaging: 11 kg/gallon set

Coverage: 10 m² / gallon set

Mixing: Mix equal parts by volume of Part A and Part B. It is better to use separate spatulas (or spoons) to avoid contamination. Blend thoroughly until color streaks disappear and uniform color is obtained. To avoid waste, prepare enough quantity to be consumed within the pot life period (1-2 hours).

Filler Putty for concrete Build up to 10mm thickness at 8,000 psi

CS36



Water 1

Hardcrete 810

Filler Putty for concrete
Build up to 10mm thickness
at 8,000 psi

2



HARDCRETE 810

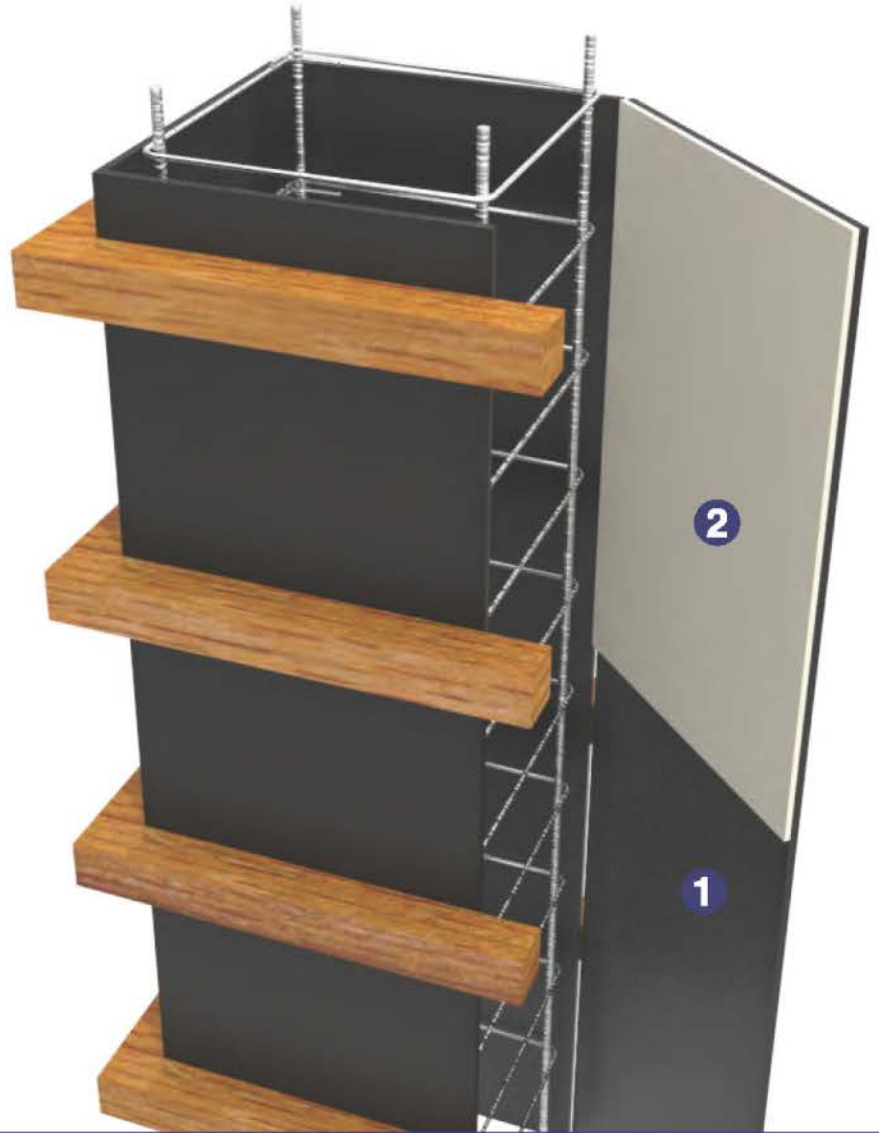
Filler Putty for Concrete Build up to 10mm Thickness 8000 psi

HARDCRETE 810 is a 100% solids thermosetting plastic compound that forms strong bonds on a wide variety of rigid materials; e.g., concrete, glass, metals, ceramics, wood, and some plastics (except polyethylene, soft PVC, and Teflon).

Packaging: 11 kg/gallon set.

Coverage: 10m² @ 1mm thickness

Mixing: Mix equal parts by volume of Part A and Part B. Better to use separate spatulas (or spoons) to avoid contamination. Blend thoroughly until color streaks disappear and uniform color is obtained. To avoid waste, prepare enough quantity to be consumed within the pot life period (1-2 hours).

1 Concrete Slab**2** **Cureform 300s**
Chemical Release Agent
for Formworks**CUREFORM 300S**

Chemical Release Agent for Formworks

CURE FORM 300S is a low-viscosity release agent for all types of concrete formwork.

Packaging: 20-liter carboys and 200-liter drums.

Coverage: Recommended coverage:
1 liter will cover approximately 20 to 60 m² depending on the porosity and texture of the mould surface. It is a specially formulated blend of mineral oils to give an easy and complete release of concrete when applied to most forms. It is used for quick, clean, and easy stripping molds for high-quality, fair faces, and stain-free concrete.



Substrate **1**

Concrete Patch H **2**
Rapid Setting Mortar for
Pavement and Floors



CONCRETE PATCH H

Rapid Setting Repair Mortar for Pavements and Floors

CONCRETE PATCH H is a cementitious pre-packed repair mortar with shrinkage compensation properties. It is supplied as a single component powder that only needs mixing with a specific quantity of water to produce a non-shrink, free-flowing, fast-setting, and high-strength mortar.

Packaging: 25 kg per bag
Coverage: A 25 kg bag of CONCRETE PATCH H mixed with 4.5 liters of water yields 16 liters (0.016m³)
Compressive strength: ASTM C109 / C109M – 13
3 hours : 2,500 psi
1 day : 4,000 psi
28 days : 6,500 psi

Mixing: Measure 4.0-4.5 liters of water and pour approximately 4 liters into the mixer. While the mixer is in operation, add 25kgs of CONCRETE PATCH H and mix for 1 minute before adding the rest of the water.

1 Fresh Concrete

2 **Hardcrete NM**
Non-Metallic Surface
Hardener



HARDCRETE NM

Non-Metallic Surface Hardener

HARDCRETE NM is a pre-mixed, nonmetallic, ready-to-use Non-Metallic Surface Hardener. It is designed to be applied as a dry shake over freshly floated concrete to provide a hard-wearing and durable monolithic floor.

Packaging: 25 kg plastic bags.

Coverage: Light to moderate duty : 3 - 5 kg/m²
Moderate to heavy duty : 5 - 7 kg/m²

PRODUCT INFORMATION



SURFIX CEMENT GRIP

Bonding Agent and Adhesion Enhancer for Mortar

SURFIX CEMENT GRIP is a multi-purpose bonding agent used for bonding new to old concrete, and tile- to-tile bonding applications. It is water-based, milky white, non-toxic with medium viscosity, and dries into a transparent film.

Packaging: Gallon and 20 Liters Carboy

Coverage: As bonding agent: 5-6sqm/liter



LEVEL UP 403

Self-leveling Compound 3-5mm Thickness at 4000 psi

LEVEL UP 403 is a ready-to-mix self-leveling underlayment mortar. It is used for leveling, smoothing, and repairing interior floors before the installation of the flooring system and coverings.

Packaging: 25 kg bag

Coverage: 25kg will cover approximately: 4.9 m² at 3mm thickness 2.94 m² at 5mm thickness

Compressive strength: 1 day, 2,000 psi 7 days, 3,000 psi 28 days, 4,000 psi

Mixing: Mix 25 kg bag of LEVEL UP 403 with 5.5 to 6 liters of clean water. Pour the water into a clean mixing vessel. Add the powder slowly to the water while mixing continuously with a heavy-duty drill fitted with a purpose-made paddle.



LEVEL UP 410

Self-leveling Compound 10-25mm Thickness at 4000 psi

LEVEL UP 410 is a ready-to-mix self-leveling underlayment mortar. It is used for leveling, smoothing, and repairing interior floors before the installation of flooring systems and coverings.

Packaging: 25 kg bag **Coverage:** 25kg will cover approximately - 1.1 m² at 10mm thickness

Compressive strength: 1 day, 2,000 psi 7 days, 3,000 psi 28 days, 4,000 psi

Mixing: Mix 25 kg bag of LEVEL UP 410 with 4.0 to 4.5 liters of clean water.



CONFIX UW1

Two Component Underwater Epoxy Putty

CONFIX UW 1 is a two-component, epoxy-polyamine combination designed for the underwater repair of concrete, vessels, tanks, barges, and other similar containers exposed under the sea or even on wet surfaces. It cures into a hard film even underwater.

Packaging: CONFIX UW 1 is available in gallon set. **Coverage:** 10m² @ 1mm thickness

Mixing: Mix Part A and Part B in equal parts by volume. A homogenous color will ensure that the two components are properly mixed.

PRODUCT INFORMATION



HARDCRETE 310

Cementitious Compound for Re-instatement of Concrete Pavements 10mm Thickness at 3000 psi

HARDCRETE 310 is a two-component, skim- smoothing ultra-paste compound specially formulated to be mixed with a select cement blend for rendering and finishing uneven concrete surfaces and pre-cast concrete panels.

Packaging: 25 kg bag **Coverage:** A 25 kg bag covers approximately 1.25 sqm at 10mm thick.

Compressive Strength: 3500 psi (28 days) (ASTM C109/C109M-21)

Mixing: Measure 3.25 – 3.75 liters of water into a clean container. Slowly add 25kgs HARDCRETE 310 into the container and mix slowly with a low-speed mechanical mixer until a homogeneous and lump-free mix is obtained.



HARDCRETE 510

Cementitious Compound for Re-instatement of Concrete Pavements 10mm Thickness at 5000 psi

HARDCRETE 510 is a cementitious pre-packed repair mortar specially designed for resurfacing, patching, and repairing large areas of concrete at a minimum thickness of 10mm.

Packaging: 25 kg bag **Coverage:** A 25 kg bag of HARDCRETE 510 mixed with 3.75 –4.5 liters of water covers approximately 1.25 sqm @10mm thick.

Compressive Strength: 5000 psi (28 days) (ASTM C109/C109M-21)

Mixing: Measure 3.75 to 4.5 liters of water into a clean container. Slowly add 25kgs HARDCRETE 510 into the container and mix slowly with a low-speed mechanical mixer until a homogeneous and lump-free mix is obtained.



HARDCRETE 620

Cementitious Compound for Re-instatement of Concrete Pavements 20mm Thickness at 6000 psi

HARDCRETE 620 is a cementitious pre-packed repair mortar specially designed for resurfacing, patching, and repairing large areas of concrete.

Packaging: 25 kg bag **Coverage:** A 25kg bag of HARDCRETE 620 mixed with 4.25 – 4.75 liters of water will cover 0.6 sqm @ 20mm thick.

Compressive Strength: (ASTM C109 / C109M – 21) 1 day : 2,500 psi 7 days : 4,000 psi 28 days : 6,500 psi

Mixing: Measure 4.25 - 4.75 liters of clean water and pour it into the mixer. While the mixer is in operation, add 25kgs of HARDCRETE 620 and mix slowly with low-speed mechanical mixers until a smooth and lump-free consistency is obtained.



BENSOIL

Construction Bentonite

BENSOIL is a selectively mined high montmorillonite sodium bentonite produced under controlled conditions.

Packaging: BENSOIL is available in 20kg bags.

READYCRETE

READY-MIX

CONCRETE

IN A BAG



We Know CONCRETE

**Solutions for
Professional Builders**

Scan to download your 2025 Solution Guide E-Catalogue



SCAN ME!

